

Single Copy 75¢
Sections - 3
Pages - 24

The Wayne Herald

Thursday, Dec. 10, 2009 134th Year - No. 11

Catch us on the web at www.mywaynews.com



(Photo by Michael Carnes)

City snowplows were out in full force Wednesday to clean up the aftermath of the first winter blizzard of the year, which dropped as much as 10 inches of snow in some parts of northeast Nebraska. A city snow emergency that was announced Tuesday was expected to be lifted Thursday morning.

Winter's first big blast of season dumps 10 inches of snow in area

BY MICHAEL CARNES
Of The Herald

The first big winter blast of the year dumped as much as 10 inches of snow in the area, leaving for a big, white, fluffy mess in its wake.

Area schools began closing Tuesday in anticipation of the storm, and all five area schools (Wayne, Wakefield, Winside, Laurel-Concord and Allen) had cancelled Wednesday's classes by early Tuesday evening, and a snow emergency was declared in Wayne by Tuesday afternoon, requiring local residents to move their parked cars off city streets.

Snow began falling early Tuesday morning, picking up in intensity as the day wore on. By Tuesday night, brisk northerly winds added to the problem, with wind gusts of up to 41 miles

per hour creating blizzard conditions that left large drifts on sidewalks, driveways and city streets in and around the Wayne area. Visibility was less than one mile in some areas, and some highways experienced drifting during the night as the blizzard rolled through the area.

The city's NIXLE emergency notification system was put into effect, with information sent out by text messages and e-mail to area residents who have already signed up for the service (to register for the free service, go to www.nixle.com).

When all was said and done, the National Weather Service reported 8.8 inches of snow had fallen in Norfolk, with reports of more than nine inches in Omaha and more than 12 inches at the Valley weather station.

See WEATHER, Page 4A

New community information service available in Wayne

By CLARA OSTEN
Of The Herald

The City of Wayne launched a new Community Information Service this October designed to deliver important and timely information to residents in our area. Using NIXLE Wayne Police department can deliver public safety and community notifications by web, e-mail, and cell phone to the public.

The creator of this service, NIXLE LLC, is sponsoring a \$10,000 grant to three agencies who sign up the most users before Dec. 22, 2009.

"Our goal is also to sign up as many users as possible before the winter severe weather season sets in. This will allow snow emergency information to be delivered in a timely basis, often to users already on the road," said Lee Wrede, Communications Supervisor for the Wayne Police Department.

All are encouraged to sign up at www.nixle.com to register, or read messages. Nixle is completely free, simple and trusted.

"We are very excited to have you experience it for yourself," Wrede added.

NIXLE is a new community information service provider built exclusively to provide secure and reliable communications. Its

authenticated service connects municipal agencies and community organizations to residents in real time, delivering information to geographically targeted consumers over their cell phones (via text messages), through e-mails and through Web access. Nixle is offered at no cost to all governments, their agencies and organizations, nongovernmental organizations and consumers.

Wayne Police Chief Lance Webster said he is very excited about this new community notification system. The Nixle notification system will allow the Police Department, and City of Wayne, to notify subscribers of important information in real time, using state of the art technology. With snow season coming one application for Nixle would be to notify Wayne of snow emergencies.

For now, Wayne residents will be able to receive police-related information and municipal government information via Nixle. Channels providing other kinds of information are expected to be introduced in the future.

Any group or organization in Wayne wishing to learn more about NIXLE is asked to contact the Wayne Police Department at 375-2626.

WSC commencement set for Friday, Dec. 18

Wayne State College will hold winter commencement at 2 p.m. Friday, Dec. 18 in Rice Auditorium.

A total of 197 degrees - 39 masters and 158 bachelors - will be conferred by Wayne State President Richard J. Collings.

Wayne Kehrlri will receive the Wayne State Foundation Alumni Achievement Award. He graduated from Wayne State College with an education degree in business in 1968. He did his practice teaching in Norfolk.

Kehrlri retired from Mutual of Omaha Bank where he was a stockholder and president of Nebraska State Bank, which was later sold to Mutual of Omaha. He is part owner and advisor to a number of closely held businesses.

Kehrlri's wife, Nancy, is a real estate agent for NP Dodge in Omaha. Wayne and Nancy serve as trustees of the Wayne State Foundation. They have two children, a son and a daughter.

Anne Elizabeth McPhillips, daughter of Eugene and Maureen McPhillips of Humphrey is one of two students who will deliver the commencement address to fellow graduates. She majored in elementary education and early childhood education.

McPhillips is a member of Wayne State Education Association of Nebraska, the Northeast Nebraska Teaching Academy, Phi Kappa Phi Honor Society, Kappa Delta Pi Education Honor Society and Alpha Lambda Delta National Freshmen Honor Society. She was council president of Anderson Hall and made the Wayne State Deans List numerous times.

She was a Skills USA Member, a Navigator for the Wayne State Office of Admissions for two years, an education peer tutor for two years, a residence hall desk worker for one and a half years, and

worried in the Instructional Technology Center in the Wayne State Library for three and a half years.

Brittany Van Beek, daughter of Kris and Harlan Van Beek of Sanborn, Iowa, will also deliver a commencement address to fellow graduates. She majored in biology with minors in speech communication and chemistry.

Van Beek is a member of Cardinal Key, Alpha Lambda Delta National Freshmen Honor Society, Lambda Pi Eta National Communication Honor Society, and Fellowship of Christian Athletes. In addition to appearing on the Deans List, she has worked as a volunteer with Haven House for three years and served as a TeamMates youth mentor for three years.

Van Beek was a four-year starter on Wayne State's volleyball team, serving as captain in the 2008 season. She was a President's Scholar Athlete from 2005 to 2008 and was named the Wayne State Student Athlete of the Year in 2008.

Stefanie Zahourek, daughter of Dan and Tracie Zahourek of Scribner, will give the invocation. Zahourek majored in speech communication with an emphasis in public relations and organizational leadership.

Zahourek served as a resident assistant in Berry Hall, vice president of programming for the Residence Hall Association, president of the WSC chapter of Lambda Pi Eta National Communication Honor Society, and national secretary for Cardinal Key National Honor Society. She is a member of Phi Kappa Phi Honor Society, Campus Crusade for Christ and participated in the WSC Symphonic Band for three years.

During the spring of 2009, Zahourek

See WSC, Page 4A

One-act team is district runner-up

The Wayne High School one-act team took runner-up honors at the 2009 B-4 District Play Production Contest held Friday at Wayne State College's Ramsey Theatre.

Four students in the cast of "The Insanity of Mary Girard" were named outstanding performers for the show. They include Katie Kietzmann, Avie Veldkamp, Tanner Schopke, and Kori Witt.

Other members of the cast are Jenny Zink, Laura Anderson, and Lila Goos. Jason Holt, Makayla Frye, Taylor Harris, Sarah Bart, Aaron Svenson, and Megan Shown provided support as the technical crew.

The play was directed by Amy Jackson and Terri Hypse.

First place was awarded to Pierce High School for its production of "Opal." Other competing schools included Norfolk Catholic, Logan View, West Point-Beemer, Madison, Boone Central, and O'Neill. Pierce will compete Thursday in Kearney at the state Class B play contest.



City sales tax numbers continue slow, gradual climb in FY 09-10

By MICHAEL CARNES
Of The Herald

After another record-setting year's worth of receipts, one might wonder if the recession that has hit the Midwest would have an effect on sales tax revenue generated in Wayne.

If the early numbers for the 2009-10 fiscal year are any indication, it would appear local shoppers aren't very concerned about the recession and are doing business in Wayne at a potential record-setting pace.

Receipts from the first two months of the new fiscal year show the city is at, or slightly above, last year's numbers and could be well on its way to its first-ever collection of \$500,000 in local sales tax receipts.

October and November revenue figures,

which are based on sales during the months of August and September, show the city has collected more than \$91,700 in revenue, which is up slightly from the \$91,569.97 generated during the same period last fiscal year.

Those early figures put Wayne on track to generate more than a half-million dollars in local sales tax revenue for the first time since the tax was first approved by voters in 2000.

The slight increase in sales tax revenue seems to fly in the face of the troubles experienced in state government, where the Nebraska Legislature was forced into a special session last month to address budget concerns over a sharp decline in tax revenue.

"I don't think we're going to be affected much by the economic downturn," city

treasurer Nancy Braden said. "It looks like local business is busy, but historically here in Wayne, even when there have been downturns, we have stayed steady or maintained about a 2 percent growth, and it's not far off it right now."

Wes Blecke, executive director of the Wayne Area Chamber of Commerce, said the fact that the agriculture economy is in good shape can have a positive impact on the city's sales tax receipts.

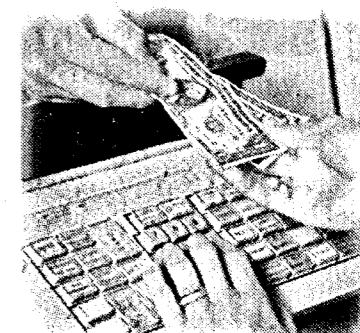
"The farm economy has been strong the last few years, and that has a huge impact on Wayne's economy," he said. "If local farmers have money in their pockets, that can have a huge impact."

Blecke said local businesses were feeling a pinch during the late summer months,

See SALES TAX, Page 4A

Month	2009-10	2008-09	Difference
October 2009	\$47,632.34	\$47,379.52	\$252.82
November 2009	44,155.77	44,190.45	(34.68)
Year To Date	\$91,788.11	\$91,569.97	\$218.14
Fiscal Year	Sales tax revenue		
2008-09	\$498,040.10		
2007-08	490,355.63		
2006-07	481,627.39		
2005-06	478,451.14		
2004-05	477,624.68		
2003-04	439,827.06		
2002-03	435,173.43		
2001-02	437,531.02		
2000-01	*352,537.50		

* Figures are for 10 months
Data courtesy City of Wayne



Black & Gold Series to present President's Holiday Gala

The Wayne State College Black and Gold performing arts series will open Sunday Dec. 13 with the tenth annual President's Holiday Gala Concert.

The concert will be at 2 p.m. in Ramsey Theatre on the Wayne State College campus, and will be followed by a dessert reception hosted by WSC President Richard and Marilyn Collings.

The popular program is designed as a fast-paced concert presented in a collage-like atmosphere, highlighting some of the select performing organizations from Wayne State College. Assembled for an audience of diverse backgrounds and tastes, the concert will include festive works and holiday music performed by the Madrigal Singers, Concert Choir, Jazz Ensemble, WSC Chorale, and Wind Ensemble, and

faculty and staff performers including Dr. David Bonert, Dr. Elise Gutshall, Dr. Linda Christensen, Joshua and Lauren Calkin, and Philip Pfaltzgraff.

Performances by the WSC Wind Ensemble have been featured at the Nebraska and Iowa Music Educators' Conventions, and the WSC Concert Choir has appeared on the Emmy-nominated Nebraska Public Television special, Holiday Harmonies, as well as in performances with the Sioux City Symphony Orchestra.

As the most select vocal ensemble at WSC, the Madrigal Singers continue a 38-year tradition of presenting annual Elizabethan Christmas Feastes on campus and throughout the region. This group has also performed for the Niobrara Center and K-MEG Television Christmas

special, and at a major opening at the Joslyn Art Museum in Omaha. The instrumental and vocal groups toured the Republic of Ireland in 2004, and northern Italy and Austria in 2008.

For more than 50 years the Wayne State College Black and Gold performing arts series has presented cultural programming to serve the northeast Nebraska region. The 2009-10 series will continue Wednesday, April 21 with a special engagement by the Glenn Miller Orchestra.

The President's Holiday Gala Concert is free and open to the public.

For more information contact the WSC Department of Music (402) 375-7359.



Christmas in the Country

A large crowd braved the snow on Sunday to attend the final performance of "Christmas in the Country" at The Barn east of Wayne. Music was provided by For the Master (Cliff Strubble, Eric Smith, Bob Dyer and Ken Dahl) and the WayneDrew Sisters (Kaki Ley, Tracy Anderson, Coleen Jeffries, Monica Jensen and Deneil Parker). The concert included numerous gospel selections and a number of Christmas favorites. For the Master was accompanied by Morgan and Madison Gill with actions on "Away in a Manger."



Early Christmas present

Providence Medical Center administrators and employees were surprised with a donation from the Wayne Eagles Club during last week's Christmas party. Providence Medical Center is the recipient of a \$5,000 Max Bair Heart Fund grant from the Eagles. The money will go toward the purchase of cardiac equipment at the hospital. Pictured are members of the Eagles Club and PMC Administrator Marcile Thomas and PMC Foundation Director Sandra Bartling.

Winter Wonderland well attended by college, community members

By JOSHUA STUHL
Of The Herald

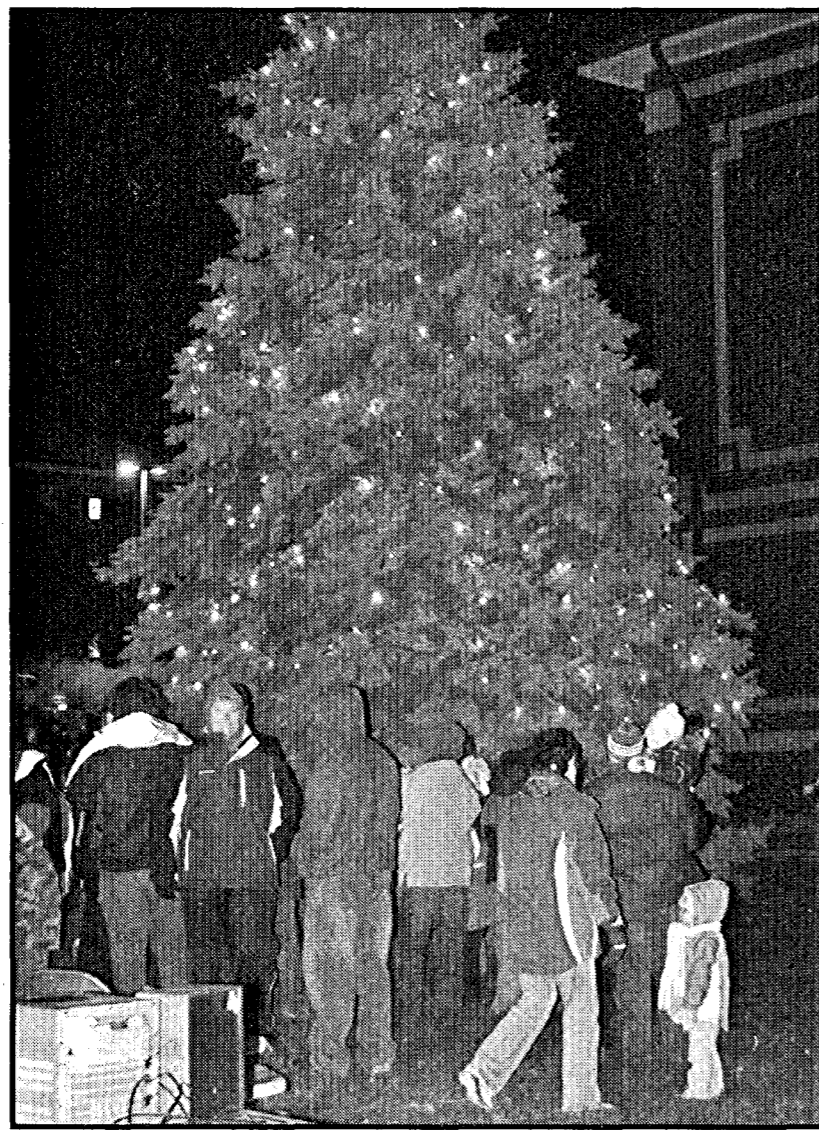
festivities. Mr. & Mrs. Clause stopped by for a photo-op - even they seemed chilled by the cold weather of Wayne.

Last Wednesday night's flurries were well timed for the first Winter Wonderland event on Wayne State College campus. The joint venture between Student Activities, Residence Assistants and the Residence Hall Association yielded a large turnout for the first snowfall of the season.

Over 100 citizens and students from Wayne joined in the frosty outdoor event to witness the lighting of the two massive evergreen trees abutting the Hahn building, sip hot cider, get pictures with Mr. & Mrs. Clause, create various Christmas crafts and carol while on a sleigh ride.

The large turnout will surely warrant future festivals. Though the game prizes and crafts reserves will definitely need to be augmented, as will the refreshments.

Not only were the sleighs the main attraction, but according to WSC student Rachel Schmitz, "the horses pulling the sleighs were by far the most pleasing part of the night." The consensus appeared to be that the well-mannered horses were certainly the highlight of the



Wayne State students and community members attended the revived Winter Wonderland at the college.

Fantasy Forest includes trees, music and food

The Wayne City Auditorium was full of people and trees on Thursday evening for the annual Rotary Soup and Dessert Supper and the return of Fantasy Forest.

Approximately two dozen trees adorned the auditorium for this year's Fantasy Forest, which was organized by the Country Classics 4-H Club.

St. Mary's Catholic Church also conducted a bake sale, with hun-

dreds of holiday treat available for hungry customers.

Also part of the event was musical entertainment by a number of groups, including students from Wayne State College and members of the Wayne Community Theatre.

The Rotary Club uses the funds generated from the event for numerous youth projects including scholarships to Wayne High and Wayne State students and dictionaries to

local elementary students.

The event continued into Friday as the weekly Chamber Coffee was held as part of the event.

Wayne Elementary School third and fourth grade students, under the direction of Monica Jensen, entertained those in attendance with numerous Christmas carols.



Those attending the annual Rotary Soup and Dessert Supper and Fantasy Forest took time to visit before heading back into the cold night.

Wayne State College Department of Art and Design hosts annual Holiday Art Sale

Wayne State College Department of Art and Design will be hosting the Annual Holiday Art Sale on Friday, Dec. 11 from 1 - 7 p.m. in the Peterson Fine Arts Atrium.

All artwork was created by WSC students and Art department faculty. Works offered for sale will include painting, printmaking, sculpture and pottery.

This event was organized by the Art Club and is free and open to the public. For more information, call 375-7429.

Call (402) 375-2600 to subscribe today

The Wayne Herald

114 Main Street Wayne, NE 68787 402-375-2600
PUBLICATION NUMBER USPS 670-560
on the web at: www.mywaynews.com

Established in 1875; a newspaper published weekly on Thursday. Entered in the post office and periodical postage paid at Wayne, Nebraska 68787.

POSTMASTER: "Address Service Requested" Send address change to The Wayne Herald, P.O. Box 70, Wayne, Nebraska, 68787

Official Newspaper of the City of Wayne, County of Wayne and State of Nebraska

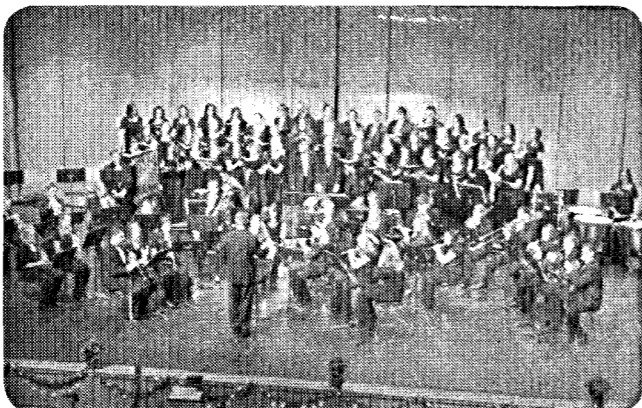
Publisher - Kevin Peterson
General Manager - Melissa Urbanec
Classifieds - Jan Stark
Advertising - Amanda Johnson and Jade Lippman
Office Manager - Linda Granfield
Managing Editor - Michael Carnes
Circulation/Editorial - Clara Osten
Composition Foreman - Alyce Henschke
Press Foreman - Al Pippitt
Pressman - Chris Luft
Columnist - Pat Meierhenry

SUBSCRIPTION RATES

In Wayne, Pierce, Cedar, Dixon, Thurston, Cuming, Stanton and Madison Counties - \$44.00 per year. Out-of-Area and Out-of-State - \$54.00 per year. Single copies 75 cents. Six-month: Area - \$34.00 Out-of-Area \$44.00.

Black & Gold Performing Arts Series

President's Holiday Gala Concert
Sunday Dec. 13, 2009 • 2 p.m. • Ramsey Theatre • No admission charge



The Wayne State College Black & Gold performing arts series presents the popular annual President's Holiday Gala Concert. Designed as a fast-paced concert presented in a collage-like atmosphere, the concert will highlight some of the select performing organizations from Wayne State College. A dessert reception will be hosted by President Richard and Marilyn Collings in the Frey Conference Suite in the Student Center after the concert. Don't miss this splendid kick-off to the holiday season!

Wayne State College
Wayne, Nebraska

E-mails regarding H1N1 vaccine profile are bogus, officials say

Keep an eye on your e-mail's inbox. If you receive an e-mail that appears to be from the Centers for Disease Control and Prevention asking you to create a personal H1N1 vaccination profile, it's a scam.

The CDC has received reports of fraudulent e-mails talking about a CDC-sponsored state vaccination program. The federal agency has not implemented a state vaccination program requiring registration on its Web site.

The e-mails tell users that they need to create a personal H1N1 vaccination profile on the CDC's Web site whether they're vaccinated or not. The e-mails say the profile

is used as part of a registration system and provide people with a link. The link takes people to a fake Web page that looks similar to the CDC's. On the page are instructions people can download to supposedly create their profile. If people click on the link to download, they're in danger of getting a virus and giving someone access to personal information.

"We've seen situations where scammers are using genuine concern about H1N1 for their own gain," Dr. Joann Schaefer, chief medical officer for the Nebraska Department of Health and Human Services, said. "This is a reminder to use common sense if you're asked

to provide personal information over the Internet."

Here are some tips to avoid becoming a victim of what's called a phishing attack:

- Do not follow unsolicited links and do not open or respond to unsolicited e-mail messages.
- Use caution when visiting untrusted Web sites.
- Be suspicious of unsolicited e-mails asking for personal information and use caution when providing personal information online.

For the latest H1N1 information, go to www.dhhs.ne.gov or www.flu.gov.

Special sign
Elizabeth Chase, director for Heritage Nebraska/Main Street, was in Wayne on Dec. 4 to present the Wayne Main Street Program with a sign to recognize its accreditation as a 2009 National Main Street Program. Chase also presented the group with a \$100 check for timely statistical reporting to her office over the past year and unveiled the new Heritage Nebraska/Main Street Community signs that will welcome people into the four entrances into Wayne. With her is Wes Blecke, Executive Director of Wayne Area Economic Development.



Looking ahead in Wayne

By Lowell Johnson, City Administrator

The next Wayne City Council meeting will be Tuesday, Dec. 15 at 5:30 p.m. in the City Council Room at 306 Pearl Street.

How Does Wayne Compare in Future Business Growth?

Some recent U.S. Survey Results from Business Site Selection magazine:

Why did you as an employee move to the community where you live?

1. For my job

Where will most of the future U.S. jobs come from?

1. Growth of existing local businesses (75 percent of future jobs will come from growth of local companies. Do everything you can to give your local businesses a competitive advantage in their market)

2. Start-up companies (The fastest growing segment in the 2009 economy is start-up businesses by people who have lost their jobs)

What's different about the cities where business thrives?

1. The companies and residents like who they are and where they are.

(Prospective new businesses often eat and shop around in a town anonymously and talk with retail clerks, waiters and waitresses to see what the local mood is before the community knows they are even looking)

Quote

"Sometimes you're the bug and sometimes you're the windshield"

Author Unknown

Questions/Comments

Email cityadmin@cityofwayne.org with questions or comments.

WSC

continued from page 1A

traveled to Taiwan to represent WSC as part of a student-and-faculty exchange with Chienkuo Technology University. Zahourek was elected national president of the

Lambda Pi Eta honorary organization in October at the annual meeting of the National Communication Association in Chicago with more than 6,000 communication scholars and students in attendance.

Sales Tax

continued from page 1A

but from what he's heard in talking to local business owners, things aren't near as bad now.

"I heard that August was not a good month for small retailers, but since then it sounds as if it's come back up," he said. "It's like we've been climbing back up since we bottomed out in August."

If past history is any indication, the city's monthly collection - which

runs two months behind when the revenue was generated - will dip during the winter months before rebounding in spring and early summer.

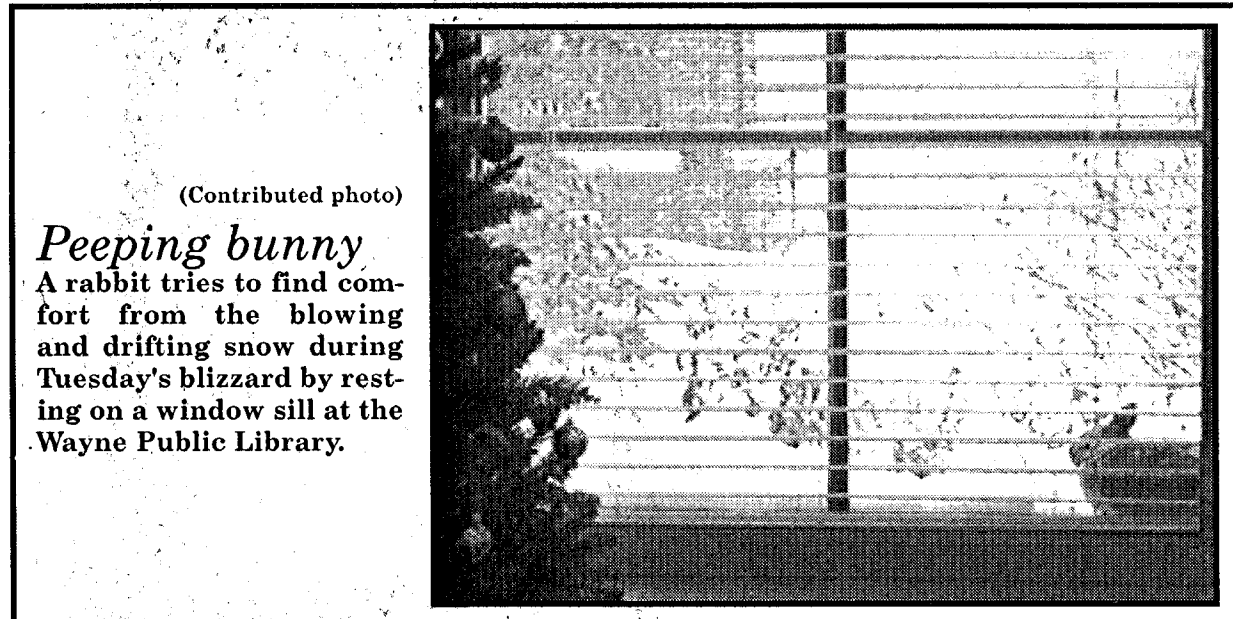
"We'll probably get more (revenue) in February, which includes December's sales," Braden said. "It looks, now, like local businesses are busy, but won't really know how it comes out until the numbers come in."

Weather

continued from page 1A

Wayne's city snow emergency, which includes a parking ban on city streets, resulted in the towing of eight cars in order to facilitate snow removal, according to Wayne police chief Lance Webster. No traffic accidents were reported during the storm.

A winter weather advisory was lifted late Wednesday afternoon by the National Weather Service, and while the snow and winds are now history, cold temperatures are expected to be the norm through the middle of next week. Forecast highs are expected to be in the lower to mid teens, with low temperatures at or below zero. Wind chills will be in the 10- to 20-below range.



(Contributed photo)

Peeping bunny

A rabbit tries to find comfort from the blowing and drifting snow during Tuesday's blizzard by resting on a window sill at the Wayne Public Library.

WAYNE'S HOME ON THE WEB
WWW.MYWAYNEWS.COM

DON'T GET PINNED

If you've been pinned by an injury, get a reversal by seeing the physical therapy team at Heartland Physical Therapy. Offering aquatic therapy in our SwimEx pool that features an adjustable current.

Heartland PHYSICAL THERAPY

Hours: Monday-Friday 8:00 a.m. - 5:30 p.m.
 (402) 833-5292 www.heartlandphysicaltherapy.com

Conveniently located on Highway 35 in Wayne • 611 Valley Drive • College Plaza Mall • Wayne, NE 68767

3 Day Sale

Friday, Saturday & Sunday

LOOK HOW EXCITING TOUCHSCREEN SALE!

LG Cookie

Buy One, Get One FREE!

NOKIA 5310 Music Xpress FREE!

with mail in rebate

We'll Pay Your Early Termination Fee!

NOW OPEN SUNDAYS!

Only Viaero shows you the competitor's prices.
 ▼ Compare the rates and see for yourself. ▼

Alltel you paid this:	Verizon not what you had with Alltel	VIAERO TO THE RESCUE!
500 Minutes National Individual 1 FREE NUMBERS \$39.99	450 Minutes National Individual 0 FREE NUMBERS \$39.99	800 Minutes National Individual 15 FREE NUMBERS \$39.95
900 Minutes National Individual 10 FREE NUMBERS \$59.99	900 Minutes National Individual 5 FREE NUMBERS \$59.99	1100 Minutes National Individual 20 FREE NUMBERS \$49.95
900 Minutes** National Shared 10 FREE NUMBERS \$69.98	700 Minutes National Shared 0 FREE NUMBERS \$69.99	900 Minutes National Shared 20 FREE NUMBERS \$59.95
1000 Minutes National Shared 10 FREE NUMBERS \$84.99	1400 Minutes National Shared 10 FREE NUMBERS \$89.99	1600 Minutes National Shared 25 FREE NUMBERS \$74.95

we are where you are.

Viaero Wireless Locations For More Information: www.viaero.com

COLUMBUS

- 410 E. 23rd St (402.606.6000) - Next to Applebee's
- 2270 26th Ave (402.606.6009) - Tres Hermanos[®]

NELIGH

- 113 West 4th St (402.887.4446) - Thriftway Market

NORFOLK

- 413 Norfolk Ave (402.851.1955)
- 201 N 31st St (402.851.1234)
- 1700 Market Ln (402.851.0600) - Sunset Plaza Mall

PLAINVIEW

- 410 W Locust (402.582.4545) - Hergert Studio

SCHUYLER

- 308 East 11th St (402.352.3119) - Shoes 4 All

WAYNE

- 304 Main St (402.518.8888)

* Limited time offer. Up to \$200 will be given as credit on your Viaero account. Service must be maintained in good standing with Viaero for 60 days prior to receiving Early Termination Fee (ETF) credit. Contract buyout not valid on 29.95 voice plan. ETF credit form (available at viaero.com or at a Viaero retail location) and copy of bill from previous carrier must accompany credit request to be eligible for ETF credit. Credit will appear on your account 4 to 8 weeks after your account is eligible and ETF credit request is processed. Only customers whose accounts are not required to be credit limited are eligible to receive ETF credit. See store for complete details. Competitor information taken from respective websites and is current as of 12/01/2009. **The Alltel shared 900 min. plan is calculated by adding a line for \$9.99 to the individual National 900 plan. † Alltel prices do not include additional charges for roaming and may not include additional charges for nights. Both Verizon & Viaero include mobile to mobile and free nights and weekends in their calling plans. In order to receive the BOGO, both lines must be activated and a 24 mo. contract is required. If you receive federal benefits such as Old Age Pension, Aid to the Blind, Aid to the Needy or Supplemental Security Income, you may qualify for discounted Basic Universal residential service under the Lifeline and/or Link-Up programs (Colorado) or the Nebraska Telephone Assistance Program (Nebraska).

Area Sports Schedule

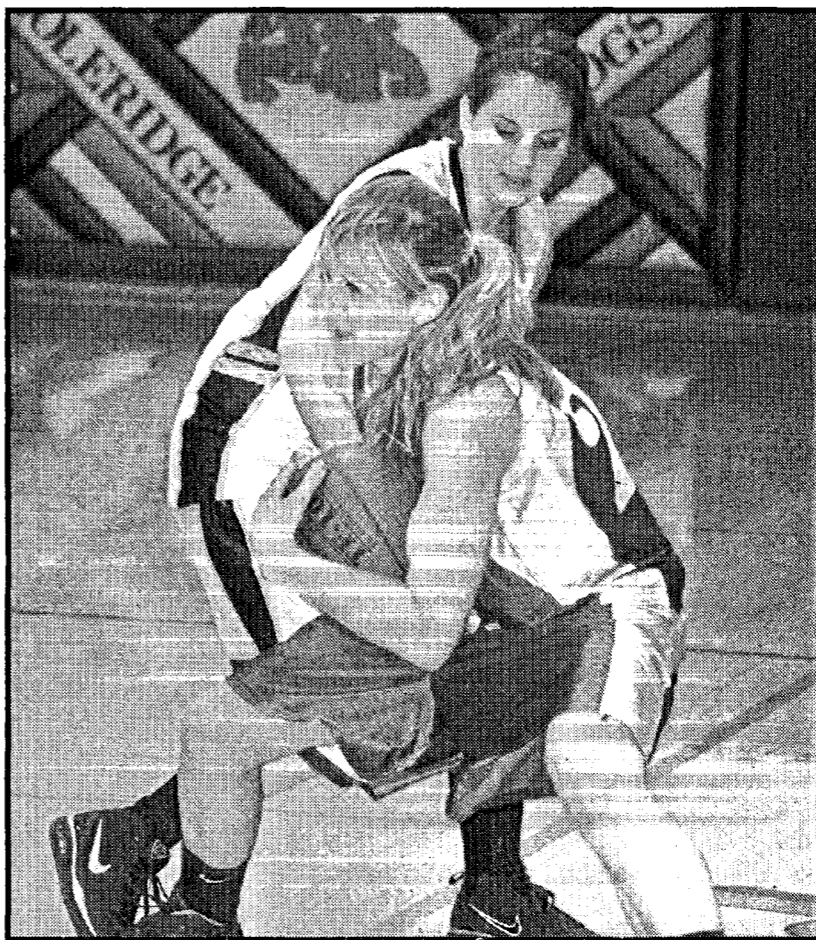
Support your hometown teams, both home and away

Thursday, December 10
GIRLS BASKETBALL - Winside at Newcastle.
Friday, December 11
BOYS BASKETBALL - Homer at Allen, Wausa at Wakefield, Bloomfield at Winside.
GIRLS BASKETBALL - Wayne at Schuyler, Bloomfield at Winside, Wausa at Wakefield, Homer at Allen.
WRESTLING - Wayne at Nebraska Duals in Columbus.
INDOOR TRACK - Wayne State Early Bird Invite.
Saturday, December 12
BOYS BASKETBALL - Wayne at Columbus Lakeview, Laurel-Concord at Randolph.
GIRLS BASKETBALL - Laurel-Concord at Randolph.
WRESTLING - Wayne at Nebraska Duals in Columbus, Laurel-Concord and Wakefield at Stanton Invite, Winside at North Bend Invite.
MEN'S BASKETBALL - Wayne State at Augustana.
WOMEN'S BASKETBALL - Wayne State at Augustana.
INDOOR TRACK - Wayne State Pre-Season Open.
Tuesday, December 15
BOYS BASKETBALL - Ponca at Laurel-Concord, Hartington at Allen, Bancroft-Rosalie at Winside.
GIRLS BASKETBALL - Ponca at Laurel-Concord, Hartington at Allen, Bancroft-Rosalie at Winside.

Bleachers - Allen girls fall 42-31 at Coleridge

continued from page 1B
 mind a playoff to determine a true champion, they'll say. The playoff comes during the season, and the bowls are the proper way to end the season.
 Hogwash...the only way to determine a legitimate national champion is to play it off, one round at a time, to show us which team is the best in the nation. Until that happens, your national champion in Div. I college football is a champion in name only...it is a sham of a championship that has not been earned in the proper manner.

 For those of you scoring at home, the picks finished with something of a whimper, going 6-4 to finish the year 86-53-1 (.618).
 We'll wrap up the football season with bowl picks next week.



Allen's Shannon Sullivan battles a Coleridge defender for a loose ball during Friday's matchup in Coleridge.

COLERIDGE - First-game jitters got the better of the Allen girls basketball team, as they came up on the short end of a 42-31 decision at Coleridge Friday night.
 Coach Logan McPhillips said the Lady Eagles' defense was pretty solid in containing the Lady Bulldogs, but getting things going on the offensive end was a little bit of a challenge.
 "We made a lot of mistakes that I think were more first-game jitters than anything, and I think we'll be able to fix those things as the season goes on," he said. "Our offense struggled and we got a little anxious and made some turnovers."
 The Lady Eagles hung tough with Coleridge, as the two teams played to a 15-15 halftime deadlock. Allen was still in the game early in the fourth quarter, but Coleridge took advantage of some Allen miscues and hit free throws down the stretch to pull away with the win.
 Ashlee Hingst had 14 points and Shannon Sullivan added 12 to lead the Lady Eagles offensively, and McPhillips was happy to see both players' offensive efforts.
 "Ashlee was looking for her shot, which is something she didn't do as much last year, so it was good to see her finish with 14 points," McPhillips said. "Shannon is our 3-point shooter and she hit a couple out there, and I was proud with how both she and Ashlee played."
 Shelby Isom had four points and Hannah Flores added one for the Lady Eagles, who will look to get on the winning side this week, as Homer comes to town Friday.
 "They're a pretty solid team, and they'll play us man-to-man with an intense press defense, so we'll need to do a good job taking care of the ball and try to play some solid defense," McPhillips said. "We'll need to play well to make it a game."

Wrestlers

continued from page 1B
 pinned him early in the final period, giving the Gators the three-point win.
 "It's hard to explain when you're up big in two matches and get pinned, but we just have to get better and be ready to go the next time around," Lawrence said.
 Wisner-Pilger 42, Wayne 39
 103: Wayne open. 112: Angelo Dominguez.

W-P, pinned Aaron Svenson, 2:37. 119: Lucas Wiechmann, W-P, pinned Garrett Vawser, 4:30. 125: W-P open. 130: W-P open. 135: W-P open. 140: Wayne open.
 145: Alex Brahmner, W-P, pinned Darnell Collins, 1:41. 152: Aaron Luschen, Wayne, pinned Ethan Ortmeier, 2:32. 160: W-P open. 171: Briesen Jensen, W-P, pinned Jared Klassen, :35. 189: Garrett Borgelt, W-P, pinned Drew Loberg, 5:22. 215: W-P open. 285: W-P open.
 (NOTE: Wayne deducted three team points for misconduct.)

Wildcats

continued from page 1B
 minutes against Northern State. Wayne State caught fire after that, going on a 13-0 run over the next 6:40 to take control. The Wildcats shot 26.1 percent in the first half, but managed to take a 25-19 lead into the break.
 "We couldn't do a whole lot right in the first half," Kielsemeyer said. "But our defense kept us in it and we didn't panic, and I'm proud of how the team continued to play hard and eventually get control of the game. We beat a decent Northern team by 22 points, and didn't play well."
 In the second half Wayne State shot 69.8 percent and outscored the Wolves 39-23 in the second half to pull away for the win.
 Sophomore Ashley Arlen had a double-double for the Wildcats with 16 points and 11 rebounds. Sophomore Clare Duwelius added 13 points, while Mara Hjelle rounded out the Wildcats in double figures, adding 10 points.
 "Mara and Ashley both had a really good weekend offensively

and both rebounded well, but both were in foul trouble way too much, and that affects our team and what we do and I've told them both that we need to cut that out."
 Hjelle and Arlen combined for 33 points in the victory over Mary on Saturday. Wayne State led by as many as 11 points before Mary battled back twice to make things interesting.
 Hjelle had 19 points and nine rebounds to lead Wayne State. Arlen added 14 points and six rebounds and Alisha Brown added a career-high eight assists. Alyssa Fischbach also added nine rebounds for the Wildcats.
 Wayne State will face a tough conference matchup Saturday evening, as the Wildcats travel to Augustana for a 5 p.m. matchup.
 "We had a chance to win there last year and couldn't get it done, and a lot of returners remember that game," Kielsemeyer said. "Augie can shoot the heck out of the ball, so it will be a strong matchup for our perimeter defense and we'll need to make sure we defend the

outside shot as best we can."
Wayne State 64, Northern State 42
 Wayne State 25 39 - 64
 Northern State 19 23 - 42
WAYNE STATE - Fischbach 1 2-2 5, Arlen 6 3-4 16, Hjelle 4 2-2 10, Schwartzwald 1 2-2 5, Christensen 1 0-0 2, Wood 1 0-0 3, Duwelius 4 3-4 13, Randall 0 0-0 0, Brown 2 2-2 6, Rohrs 0 0-0 0, Wagner 2 0-0 4, Amundson 0 0-0 0. **Totals 22 14-16 64.**
NORTHERN STATE - Barondeau 5 0-0 12, Reinschmidt 3 0-0 6, Higgins 1 0-0 2, Becken 2 2-2 7, Rausch 0 0-0 0, Reynolds 2 0-0 6, Schmidt 0 0-0 0, Zins 1 0-0 2, Hintz 0 0-0 0, Doerr 1 0-0 2, Rabenberg 2 1-3 5. **Totals 17 3-5 42.**
Three-point goals: Wayne State 6 (Fischbach, Arlen, Schwartzwald, Wood, Duwelius 2), Northern State: 5 (Barondeau 2, Becken, Reynolds 2). **Team fouls:** Wayne State 13, Northern State 13.
Wayne State 65, Univ. of Mary 55
 Wayne State 29 36 - 65
 Univ. of Mary 22 33 - 55
WAYNE STATE - Fischbach 2 2-4 7, Arlen 4 5-12 14, Hjelle 8 3-6 19, Schwartzwald 2 0-0 4, Christensen 0 0-0 0, Wood 1 0-0 3, Duwelius 3 1-2 9, Brown 1 4-5 6, Wagner 1 0-0 3, Amundson 0 0-0 0. **Totals 22 15-29 65.**
UNIV. OF MARY - Brattlen 1 3-5 5, Zillmer 0 0-0 0, Luke 1 0-0 2, Weigelt 0 1-2 1, Petersen 5 3-3 15, Rogers 2 0-0 4, Knife 2 1-2 5, Finley 1 0-0 3, Messer 1 0-0 2, Kelsch 0 0-0 0, Sipman 8 2-4 18. **Totals 21 10-16 55.**
Three-point goals: Wayne State 6 (Fischbach, Arlen, Wood, Duwelius 2, Wagner), Mary 3 (Petersen 2, Finley). **Team fouls:** Wayne State 15, Mary 22.

GIVE THE GIFT OF HEALTH!

Gift Certificates are available for individuals on your holiday gift list.

Purchases may apply to wellness center memberships, punch cards, classes and personal training packages.

Remember...yearly memberships include free use of the WSC swimming pool!

Come see for yourself why the PWC is the 'state-of-the-art' place to work out!
 We offer a wide variety of classes -
 Pilates/Body Sculpting, Yoga, Zumba, Deep Water Aquasize and Seniors on the Move.
NOW OFFERING: Nutritional Coaching with our Certified Nutrition Specialist.

Providence Wellness Center
 402-375-7927
 Located in the lower level of Providence Medical Center

Visit The All New

Hours:
 10am-1am, Fri-Sat
 10am-11pm, Sun-Thur

Must be 21 years of age to play.

402-695-0180
 1106 S. Main Street
 Emerson, NE
 www.winnebago casinos.com
 Owned & operated by the Winnebago Tribe of Nebraska

Enjoy Our Completely New NON-SMOKING CASINO!

★ 120 HOT NEW MACHINES! ★

★ TASTY NEW MENU! ★

BOWLING RESULTS

brought to you by:

Melodee Lanes Wildcat Lounge

1221 N. Lincoln • Wayne, NE 68787
 375-3390 • 375-2319

City League		Fredrickson 223, Blake Thompson 213/206, Justin Cunningham 208, Mike Varley 207, Nick Bidroski 205, Andy Maki 201, Brad Jones 200, Deb Moore 180.	
Week #13 12/1/09		Notable Series	Taylor Fredrickson 650, Blake Thompson 613.
Wildcat Sports Lounge	29.0	Splits	Brad Jones 2 7 8, Mike Varley 4 6 7.
Tom's Body Shop	28.0	Hits and Misses	
Y104	28.0	Week #12 12/2/09	
Logan Valley Golf Course	27.0	Gary's Foodtown	35.0
Half Ton Club	27.0	Stadium Sports	29.5
Harder & Ankeny PC	24.0	Handicappers	27.5
Ghost	24.0	Kathol and Associates	27.0
Brudigam Repair	21.0	Ping Tree Service	26.5
High Team Game and Series: Wildcat Sports Lounge, 998 and 2913. High Game and Series: Dustin Baker, 244 and 646.		Logan Valley Golf	22.0
Notable Games	Mike Varley 237, Joel Baker 238/208, Mick Kamp 233/212, Layne Beza 231/222, Brian Kamp 224/204, Steve Jorgensen 224, Randy Bargholz 222/210, Mike Grosz 222, Brad Jones 218/207, Mark Klein 215, Dustin Baker 212, Scott Schultz 212, Bennett Salmon 209, Casey Daehnke 208, Andy Baker 202, Rick Kay 201.	State National Bank	22.0
Notable Series	Joel Baker 620, Mick Kamp 625, Randy Bargholz 630.	Tacos and More	20.0
Wed-Nite Owls		White Dog Pub	15.5
Week #10 11/25/09		Lucky Lady Lockers	15.0
The Max	29.0	High Team Game and Series: Stadium Sports, 910 and 2667. High Game: Linda Stewart, 205. High Series: Deanna Thompson, 564.	
Team Victory	28.0	Notable Games	Kristy Otte 184, Renee Saunders 180/192, Deanna Thompson 180/193/191, Cindy Thompson 186, Essie Kathol 188, Deb Gustafson 192, Joleen Jensen 187, Cindy Echtenkamp 198, Kristine Niemann 189.
Melodee Lanes	28.0	Notable Series	Renee Saunders 534, Linda Stewart 491, Essie Kathol 483, Deb Gustafson 510, Deb Moore 501, Cindy Echtenkamp 506, Kristine Niemann 491, Renee Jacobsen 493.
Wildcat Sports Lounge	27.0	Split	Julie Hartung 5 8 10.
High Team Game: Team Victory, 751. High Team Series: Melodee Lanes, 2215. High Game: Taylor Fredrickson, 237. High Series: Andy Baker, 664.			
Notable Games	Andy Baker 234/222/208, Taylor		

Tom's BODY & PAINT SHOP, INC.

108 Pearl St.
 Wayne, NE
 375-4555

FREE ESTIMATES!

Where being in the Dog House is a GREAT Place To Be!!

WHITE DOG PUB

OPEN 7 DAYS A WEEK
 102 Main, Wayne
 375-9958

FREDRICKSON OIL CO.

Hwy. 15 N • Wayne, NE
 402-375-3535 1-800-672-3313
 Open 7 Days A Week • 7:00 AM - 9:30 PM
 Brakes • Exhaust Work • A/C Repair • Diagnostic • Alignment

Stress & Your Health

Definition

Traffic Jams. Paying Bills. Deadlines. Pesky neighbors. These unpleasant or challenging situations create stress in our lives. So why is it some people deal with these stress situations better than others? The answer is complex and includes many factors from genetics to weather conditions, but an interesting study in The Journal of Manipulative and Physiological Therapeutics indicates that there is a relationship between chiropractic and the effect it can have on dealing with stress situations in your life.

This study revealed that nearly one in three patients viewed their lives as moderately to severely stressful, and more than 50% felt that stress had a moderate to severe impact on their health problems. Additionally, 71% of the patients indicated that it would be helpful if their chiropractor offered advice to help them cope with these stressful situations.

Most people know that improving nerve and spinal function has a dramatic impact on improving emotional, mental and physical function. Communicating with your chiropractor about dealing with stress is the starting point, and you might be surprised to find that your chiropractor is full of sound advice on ways to effectively deal with stress in your life.

Source: JMPT, July/August 1999 (originally published in the PCO Chiropractic Newsletter)

Herman CHIROPRACTIC

803 Providence Rd., Ste.101
 Wayne, NE 68787
 (402) 375-3450

309 Main Street
 Pender, NE 68047
 (402) 385-0183

www.hermanchiro.com



(Photo by Michael Carnes)

Riley Hoffart dribbles the ball up the floor while being closely guarded by Battle Creek's Jaci Weidner during the Blue Devils' season-opening win Friday night. The Wayne girls have road tests at Schuyler and Columbus Lakeview this weekend.

Wayne girls use big early lead to cruise to 47-33 home victory

The Wayne High girls basketball team got out to a big lead early and cruised to a 47-33 win over Battle Creek in the season opener for both teams Friday at Wayne High School.

The Lady Blue Devils scored the game's first 10 points and had a 14-2 lead after one period, then responded to Battle Creek's only real challenge in the second period to take a 27-17 halftime lead.

"Our performance exceeded my expectations," coach Nate Wall said. "We got off to a great start and finished well, and I was really

impressed with our defense."

Wall cited the efforts of Jordan Alexander and Carly Fehringer, who suffocated Battle Creek's standout Michaela Barry and limited the freshman phenom to 14 points.

Caitlin Fehringer came off the bench and scored 12 points to lead the Blue Devils, while Riley Hoffart added 10 points. Caitlin Fehringer also had six rebounds and four steals.

"Our bench came up huge, and they had to because of early foul trouble to some of our starters," Wall said.

Shannon Jarvi had 10 rebounds and three assists to lead Wayne. Katie Hoskins had nine points and two blocked shots.

Wayne	47	Battle Creek	33
Wayne	14	13	10
Battle Creek	2	15	4
Wayne	10	10	12
Battle Creek	12	12	33

Wayne - Carroll 2 0-0 6, Fallesen 0 0-0 0, Jarvi 1 0-0 2, Alexander 1 1-3 3, Hoffart 3 2-3 10, Stowater 1 0-0 2, Cai. Fehringer 5 1-2 12, Calhoun 0 3-4 3, Hoskins 4 1-2 9, Car. Fehringer 0 0-0 0. Totals 17 8-15 47.

BATTLE CREEK - Kudera 2 0-1 4, Belt 2 0-0 4, Daum 2 3-4 7, Weidner 1 0-1 2, Barry 4 6-7 14, Unkel 1 0-0 2, Reed 0 0-0 0. Totals 12 9-13 33.

Three-point goals: Wayne 5 (Carroll 2, Hoffart 2, Cai. Fehringer). Team fouls: Wayne 18, Battle Creek 21.

Wayne boys outlast Wakefield

WAKEFIELD - Wayne's depth proved to be a little more than the Wakefield boys could handle, as the Blue Devils got past the Trojans 44-34 Saturday afternoon in an inter-county matchup.

The visiting Blue Devils broke free in the third period, turning a one-point halftime lead into an 11-point lead going into the final period.

"We changed our press and were able to get some more turnovers in the third quarter, and we really took advantage of those," coach Rocky Ruhl said.

Wakefield coach Mike Clay said he was impressed with Wayne's team after watching them beat Battle Creek the night before, and knew his team would face a tough

test.

"After watching them play Battle Creek, I was really concerned with Wayne's depth and I think, down the stretch, they did wear us down some," he said. "We're not a big team, and their length and athleticism, especially in the post, gave us some problems."

Although Wayne took control of the game in the third, Ruhl knew his team wasn't going to run wild against the Trojans.

"Whenever you play Wakefield, they always play great defense," he said. "I think, after Friday, we were a little tired from the emotion of the night before, and it was a defensive battle for both teams."

Wayne, 2-0, had a balanced scoring attack with Brady Soden's

14 points leading the way. Derek Poutre added seven, Jordan Barry, Jacob Zeiss and Keegan Dorcy each had five, and Gage Rethwisch and Justin Anderson both scored four points.

The 1-1 Trojans were led by Chad Clay with 14 points and Tyler Bodlak with 10. Also scoring were Brock Soderberg with five, Hugo Otis with four and Alex Schultz with one.

In JV action, Wayne beat Wakefield 40-20. Miles Anderson scored 11 and Jordan Backer added seven to lead the visitors. Andrew Long and Chris Rogers each had five, Joey Lenihan and Zach Thomsen scored four points each and Luke Trenhaile and Collin Preston had two points apiece.

District football honorees are named

Area football players were selected to their respective all-district football teams in voting announced by district coaches recently.

Wayne High had three players named to the Class C1, District 5 team. Selected were seniors Jorge Dunklau and Derek Poutre and junior Drew Loberg. Honorable mention honors went to seniors Darnell Collins, Shawn Davie, Levi Kenny and junior Jacob Zeiss.

In Class C2, District 5, Wakefield had two players selected to the all-district team, including Chad Clay and Chris Matias. Laurel-Concord had Tony Brandow, Johnny Saunders and Travis Nelson earn first-team honors. Honorable mention selections went to Tyler Bodlak and Wyatt Jacobsen of Wakefield and Beau Lubberstedt of Laurel-Concord.

Five Winside players were named to the Class D1, District 4 first team. Jordan Nelson was named to both the offensive and defensive lines, Kalin Koch

was named as quarterback, and kick returner, Sage Schwedhelm was named at linebacker, Zach Brokaw at defensive back and Justin Buresh at kicker. Brad Doffin earned honorable mention selection on offense. On the second team, Brokaw was tabbed at offensive end, Anthony Nelson at running back, Buresh on the defensive line, and Anthony Nelson at linebacker.

Both Cody Stewart and A.J. Williams were first-team selections to the Class D2, District 4 squad. Williams was named as a defensive back, running back and return specialist, while Stewart was tabbed at receiver and defensive back. Second-team honorees were Cole Bathke on the offensive line, Heath Roeber at running back, Cody Logue on the defensive line and Stewart at punter. Honorable mention selections were Chase Isom, Jarret Warner and Alex Langseth on offense and Warner, Isom, Jacob Woodward and Austin Roeber on defense.

Winside falls to hot-shooting Wynot

WYNOT - While the score may look lopsided, Winside coach Jeff Messersmith felt his team played well in a 69-44 road loss to Wynot on Friday night.

It was hard for the Wildcats to keep up with the hot-shooting Blue Devils, who hit an amazing 73 percent from the field (26-of-36) and rode a 20-point halftime lead to the victory.

"We played very aggressive and forced (18) turnovers, and if they hadn't shot 73 percent we'd have been in the game," he said. "They shot a tremendously high percentage, and we'd have had to make 50 percent just to keep it close."

The Wildcats shot just 33 percent from the floor and were led by Michael Lage, who hit 4-of-8 from the floor and finished with a team-high 13 points.

"Michael ran the court well and helped lead the defensive effort with Tanner Woslager," Messersmith said. "As he gets stronger and better understands his role, I think we'll see more production from Mike."

Winside's big man in the middle, Nathan Janke, scored nine points in a limited role as he continues to regain his strength after a back injury kept him out of action last year.

"As he progresses the next couple of weeks, he's going to be a big force

for us," Messersmith said. "Wynot had three big guys, but when we had him in there it really balanced things out. If we can keep him healthy, he's going to be a force for us."

Also scoring for Winside were Woslager with eight, Jordan Jaeger with six, Blaine Meyer with five and Seth Mangels with three.

In JV action, Winside won 35-28. John Hansen had 11 points, Ricky Wright put in eight, Alec Sindelar had six, Brian Gruenke put in two and Tyler Jaeger had a free throw.

Winside hosts Bloomfield on

Friday and Bancroft-Rosalie on Tuesday.

Wynot 69, Winside 44
Winside 9 12 7 16 - 44
Wynot 18 23 11 17 - 69
WINSIDE - Lage 5-2-4 13, J. Hansen 0-0-0, T. Jaeger 0-0-0, Meyer 2-0-5, J. Jaeger 2-0-2 6, Mangels 1-1-3 3, Sindelar 0 0-0 0, Woslager 2-4-10 8, Wright 0 0-0 0, Skokan 0-0-2 0, Janke 2-5-7 9. Totals 14 12-28 44.
WYNOT - A. Wieseler 1 0-0 2, M. Wieseler 3 1-2 9, D. Wieseler 7 3-3 18, Heimes 0 0-0 0, Schmidt 2 0-0 4, Sudbeck 0 0-2 0, Bruening 1 0-0 2, Stappert 3 1-1 7, J. Boeckman 3 0-1 6, Thoenes 1 0-0 0, R. Boeckman 5 2-6 12, C. Boeckman 3 1-1 7. Totals 29 8-16 69.
Three-point goals: Winside 4 (Lage, Meyer, J. Jaeger 2), Wynot 3 (M. Wieseler 2, D. Wieseler). Team fouls: Winside 19, Wynot 21.

**421 Main
Wayne, NE
402-375-2090**

**Open Monday-Friday 12:30 p.m. - Midnight
Saturday 10 a.m. - Midnight**

**Please Join Us For Our Grand
Opening Friday, Dec. 11
Ribbon Cutting at 5:30 p.m.
Beer, Wine & Liquor Tasting 6-8 p.m.**

Under New Ownership!

Come See My Daddy at...

CANHAM MAYTAG

Sales & Service

New & Used Appliances

1102 Riverside Blvd. • Norfolk, NE 68701
402-371-0900 • 888-371-0908

Wildcats finish ranked No. 18

The Wayne State volleyball team finished the season with a No. 18 ranking in the final AVCA Div. II Top 25 Coaches Poll.

The Wildcats, who finished the year 29-8, were one of five NSIC teams listed in the final rankings. Concordia St. Paul won its third straight national title and finished the year ranked No. 1. Other NSIC teams ranked included Minnesota Duluth at No. 14, Southwest Minnesota State at No. 16 and Minnesota State-Mankato at No. 17.

Area runners earn all-state

Cory Foote of Wayne and Katie Jacobsen of Laurel-Concord/Coleridge were both named to the Nebraska Coaches Association's All-State cross country teams.

Foote led the Wayne boys to a third-place finish in the Class-C boys competition this year. Jacobsen earned her third individual medal in as many trips to the state meet.

CORY BROWN CONSTRUCTION

Call Cory for a bid on your next remodeling or construction project.

at 402-278-2518
Wakefield, NE

Give the Gift of Nebraska

Nebraska State Park Permit - Your ticket to fun in 86 park areas statewide. Easy to buy, easy to mail - don't forget to buy one for yourself!

Hunting and Fishing Permits - Good for a whole year of outdoor fun! Lifetime permits also available - great for kids, grandkids and graduates.

Buy a Lifetime Habitat Stamp before Dec. 31 and save \$80! New pricing Jan. 1, 2010.

NEBRASKAland Magazine - Filled with news, interesting articles and breathtaking photos, a subscription is the ideal gift for friends and family, wherever they live.

Game and Parks "Bucks" - Let them choose their own gift. Good on Game and Parks merchandise, permits, camping fees.

Buy online or call 800-742-0056 (8 am - 5 pm, M - F) **NEBRASKA**
www.OutdoorNebraska.org GAME & PARKS

**Now serving outreach clinic patients at
Providence Medical Center**

Dr. Richard Gitter
Cardiothoracic and Vascular Surgeon
Mercy Medical Center—Sioux City

Certified: American Board of Surgery
American Board of Thoracic Surgery

Dr. Gitter now provides expert consultation in all aspects of vascular, endovascular, thoracic and cardiac surgery. He sees patients at Providence Medical Center each month. We look forward to serving new and existing patients.

Call (402) 375-7953 for more information.



Mercy
CARDIOTHORACIC SURGEONS
A partner with Mercy Medical Center—Sioux City

HALF PRICE

HOLIDAY ICE CREAM LOG CAKES

Reg. price \$13.99 (serves 8-10)

Layers of fudge and chocolate cookie crunch surrounded by DQ's premium chocolate & vanilla soft serve.

AT THE WAYNE DQ NOW THRU DEC. 23RD!

BEAT THE CROWD BY RESERVING YOURS!

402-375-1404

Sunday - Thursday 10 a.m. - 10 p.m. • Friday - Saturday 10 a.m. - 11 p.m.

Wayne State tracksters picked seventh, eighth

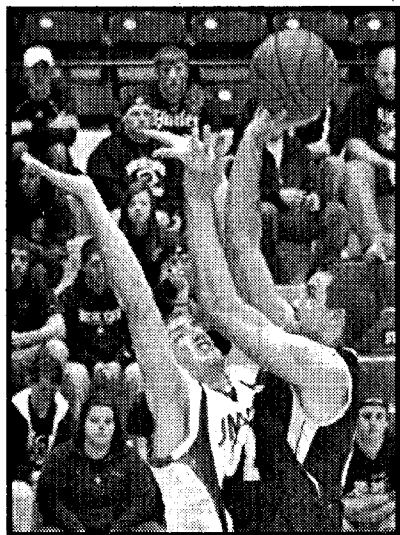
The Wayne State indoor track and field teams are expected to finish in the middle of the pack, according to voting by NSIC coaches last week.

The Wayne State women are picked to finish seventh this season, with sprinter Christina King and hurdler Paige Pollard tabbed as Wayne State's athletes

to watch.

The Wayne State men are predicted for an eighth-place finish this season. They will be led by distance runner Nate Preston and pole vaulter Cody Diehl.

Wayne State will host its annual Early Bird Invite and Pre-Season Open this weekend at the Wayne State fieldhouse.



(Photo by Michael Carnes)

Wayne State's Brad Starcken shoots over a University of Mary defender during the Wildcats' 73-62 loss to the Marauders Saturday.

Wildcats pick up NSIC split

Senior Brett Spiker poured in a career-high 27 points and pulled down 11 rebounds to help Wayne State pull off a thrilling 74-72 win over Northern State Friday evening in the Northern Sun Conference opener for both teams.

The Wildcats missed out on a chance for a home sweep, however, as University of Mary jumped out to a 10-point lead early and pulled away for a 73-62 win Saturday afternoon at Rice Auditorium.

Friday's game featured 14 lead changes and three ties in the second half before a missed layup by the visiting Wolves and a late free throw by Ryan Rudloff gave the Wildcats the two-point win.

"I thought we played with a lot of energy and played extremely well, and we showed a lot of character to come back from being down six in the second half and stick to the game plan," coach Paul Combs said. "It was great to see the guys making plays down the stretch."

The two teams battled back and forth early in the game until Wayne State put together a strong run to take a 40-31 lead at the break. Trailing 20-17 at the 10:01 mark of the first half, the Wildcats went on a 12-0 run over the next 6:21 to take a 29-20 lead following an Amry Shelby lay up with 4:20 to play in the first half.

Northern State came out strong in the second half and outscored Wayne State 16-7 to tie the game at 47-47 with 14:41 left. The Wolves would build a seven-point lead before Wayne State battled back.

"We've let some leads slip away, but I thought in the second half we were very disciplined and able to play a half-court game and make plays down the stretch," Combs said. "It all balanced out for us."

Shelby tied his career high with 18 points, while Jason Jensen poured in a season-high 13 points for Wayne State.

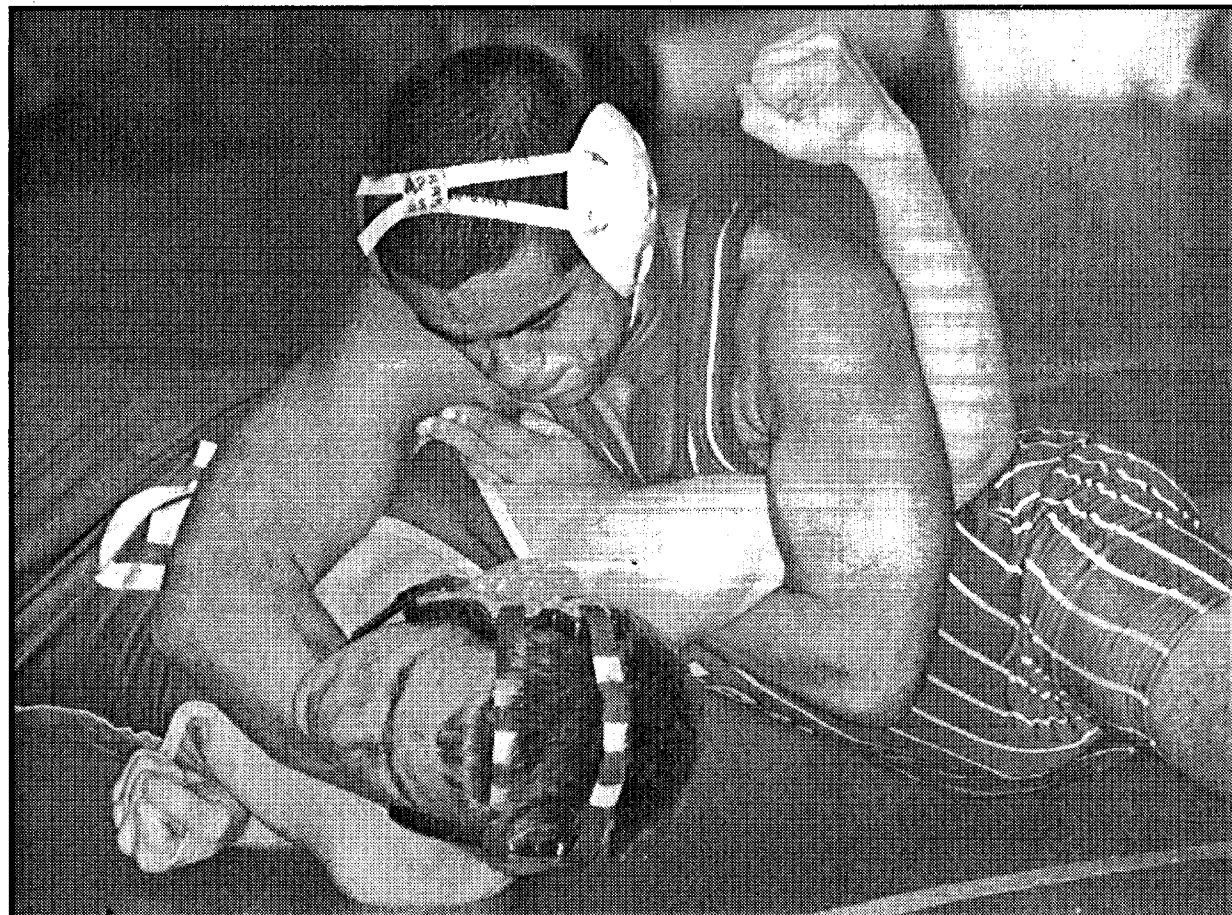
The University of Mary led from start to finish in Saturday's game, which dropped the Wildcats to 2-5 overall and 1-1 in the NSIC.

"The first 10 minutes was the key to the game, and you have to give Mary credit for knocking down a lot of shots early," Combs said.

Mary jumped out to an early 7-0 lead and built a 21-10 advantage with 10:35 to play in the first half. They led 38-21 at halftime, and Wayne State got within nine points at 40-31 with 15:50 to play following a jumper by Shelby.

Spiker had another stellar game for the Wildcats, recording 23 points and 12 rebounds for his second straight double-double. Shelby notched a career-high with 21 points as the only other double-figure scorer for Wayne State.

Wayne State will be on the road Saturday, visiting Augustana



(Photo by Michael Carnes)

Winside's Kalin Koch works for a pin against Alex Heithoff of Neligh-Oakdale at the Creighton Invitational. The Wildcat senior finished second in the tournament.

Area teams open at Creighton Invite

By LEE KOCH
Special to the Herald

CREIGHTON - Winside finished in the middle of the pack at the Creighton Invitational wrestling tournament Saturday, as the Wildcats finished in eighth place in the 18-team field.

The Wildcats, who finished the day without an individual champion, were led by runners-up finishers Paul Hansen (112), Kalin Koch (145) and Jordan Nelson (171).

Hansen lost his finals match to Gareth Bowder of Pender by a 6-1 score, while Koch lost a 3-1 match to Paul Cheyney of Stanton, a state runner-up in Class C last year. Nelson was forced to default his finals match due to injury.

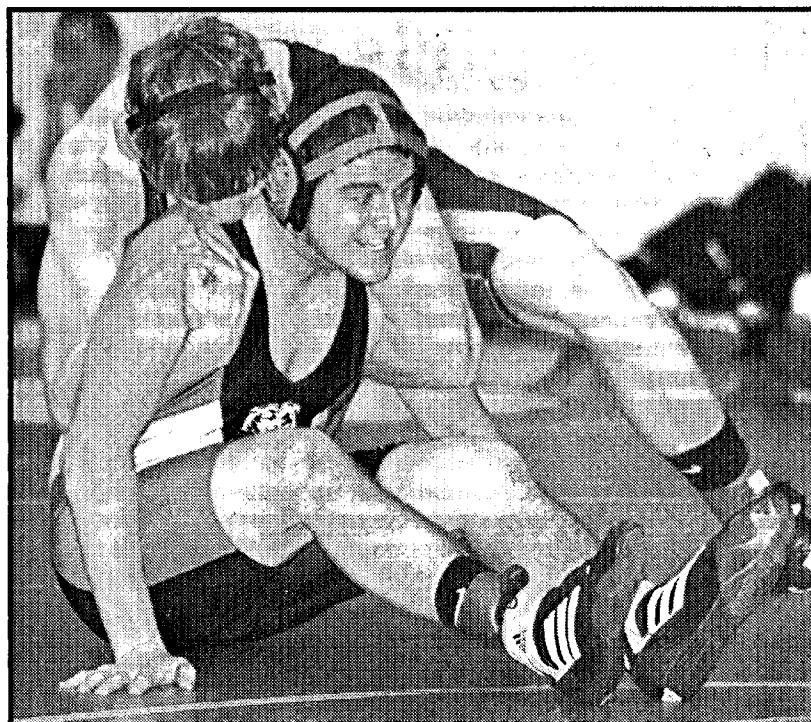
Laurel-Concord finished in 15th place, as Riley Lund (215) placed sixth, losing his medal round by match limitation. He earned the Bears' only medal on the day.

Winside, minus the services of varsity wrestlers Ethan Thies and Zach Brokaw - along with returning letterwinners Kelby Prince and Sage Schwedhelm - wrestled short-handed for the opening competition, a situation that should be corrected as the season progresses according to coach Paul Sok.

"Overall, I would consider the tournament on Saturday to be moderately successful," he said. "The team did not finish as high as hoped but there were several factors to be taken into consideration. We did not have a number of guys at the weights they will be at later on during the year and we have some injury factors that kept a couple of individuals out of the first meet."

"Throw in an injury at the tournament (Nelson) that resulted in an injury default in the finals, along with a few early season miscues that kept a couple of other individuals from placing, and you finish in the middle of the pack," he added.

Also earning medals for the Wildcats were Brady Wurdemann, sixth at 103 pounds; Forrest Jones, fourth at 152 pounds; and Anthony



(Photo by Michael Carnes)

Laurel-Concord's Riley Lund tries to get out from the hold of Creighton's Russ Volquardsen in this 215-pound battle. Lund lost the match, but came back to finish sixth.

Nelson, who finished third in the 215-pound weight class.

"Hopefully we can get the injuries healed up and keep following the weight loss plans for some individuals and go into the North Bend invite a little stronger," Sok said. "When you look at the whole picture I don't think the team did too bad. We ended up with three in the finals and three other placers for a total of six medals. Throw that in with four other individuals winning matches and I felt the team had a moderately successful day."

The Bears, under the tutelage of head coach Don Maxwell, fielded a young, inexperienced team with Lund and Jon Jacot the only returning wrestlers with varsity experience.

"With as much inexperience as we have, I thought our kids did a good job," Maxwell said. "Riley (Lund) wrestled at 215 and weighed in at 193, and he did a good job fighting back for sixth after getting beat in the quarters. Austin (Roach) made

some mistakes and probably would have placed at 152, and Jon Jacot made a mistake that cost him a chance at a medal, but overall they did a good job."

Winside travels Saturday to compete in the North Bend Central Invitational while the Bears will wrestle in the Stanton Invitational.

Creighton Invitational Team Standings

Parkston 194.5, Plainview 172.5, Battle Creek 162.5, Crofton 143.5, Creighton 139, Stanton 138, Pender 128, Winside 125, Neligh-Oakdale 112, Norfolk Reserves A 85, Elkhorn Valley 44, Norfolk Reserves B 31, Osmond 30, Hartington Cedar Catholic 17, Laurel-Concord 13, Pender JV 7, Randolph 4, Creighton JV 3.

Area Medal Results

103: 5. Jake Betzen, Stanton, dec. Brady Wurdemann, Winside, 7-0.
112: 1. Garrett Bowder, Pender, dec. Paul Hansen, Winside, 6-1.
145: 1. Paul Cheyney, Stanton, dec. Kalin Koch, Winside, 3-1.
152: Tie 3rd. Forrest Jones, Winside and Dillon Delaney, N-O, both at match limit.
171: 1. Landon Pospisil, Creighton, def. Jordan Nelson, Winside, default.
215: 3. Anthony Nelson, Winside, def. Deryk Wortmann, Crofton, match limit. 5. Jerome Koenig, Norfolk Reserve A, def. Riley Lund, L-C, match limit.

Wayne freshman girls open with road losses

The Wayne High freshman girls basketball team lost both of its first two games as it opened its 2009-10 schedule.

Wayne opened the season Thursday with a 34-26 loss at Norfolk Catholic. Sarah Maxson led the team with 14 points, Kennedy Stowater added seven, Hannah Gamble put in three and Jaci Alexander added two

points. On Monday, the Blue Devils were edged by Randolph 44-39. Maxson led the scoring with 20 points and Megan Hoffart added 14. Gamble and Alexander each had two points, while Sydney Harris added a free throw. The team plays at the Oakland-Craig 9/10 Tournament on Saturday.

Looking for a New Gift Idea??
Check out our Visa Gift Cards

- ◆ Issued Instantly ◆ Zero Liability
- ◆ Accepted everywhere Visa is Accepted
- ◆ Easy & Simple to Use ◆ Safer than carrying cash

"The Bank Where You're Somebody Special"

farmers & merchants state bank of Wayne

321 MAIN STREET • P.O. BOX 249
WAYNE, NE 68787 • 402-375-2043
www.fmsbwayne.com/index.html

Member FDIC LENDER

Don't Forget To Get Your Christmas Gift Certificates & Book Your Christmas Parties in our new back room!

20 piece Chicken To Go with 2 Lbs. Fries & 2 Liter Pop for \$18.99 Wed.-Sat.

SAVE YOUR GAS!! WE DELIVER!

WAYNE, AMERICA
109 Main Street • 375-9817

Copiers • Facsimiles • Digital Copiers • Digital Duplication

Elite Office Products

Home Of Customer Service

- Purchase • Rent
- Lease • Sales • Service

TOSHIBA MINOLTA hp STANDARD

Russ Stusse Printer Sales • Printer Repair • Paper & Supplies

402-329-4301 • Toll Free 877-329-4301

CAR CARE

Fredrickson Oil Co.

New services available at our CONVENIENCE STORE

STATION SERVICES INCLUDE:
Self Service • Full Service • Competitive Pricing • Tune-ups
4 full & 4 self service products • Brake Service
Exhaust Service • Lubrication • Alignments
Computer Balancing • Air Conditioning Service

1 3/4 Miles N. on 15 Wayne, NE
Phone 375-3535 or toll free 1-800-672-3313

CONOCO
1 On-Farm Tire Service Trucks
Tank Wagon Service
MICHELIN
BFGoodrich
Sinclair

WAYNE AUTO PARTS INC.

COMPLETE MACHINE SHOP SERVICE TRUCK & TRACTOR PARTS

33 YEARS

117 SOUTH MAIN WAYNE 375-3424
Monday-Friday 7am - 5:30 pm Saturday 7 am - 4 pm

TOM'S Body & Paint Shop, Inc.

Member of Nebraska Auto Body Association

108 Pearl Street
Wayne, NE 68787
Phone (402) 375-4555

MEMBER NEBRASKA AUTOBODY ASSOCIATION, INC.
Dedicated to Excellence in Service

GOODYEAR

ON-FARM FUEL DELIVERY SPECIAL PRICES ON SPRING OIL DELIVERIES

WE HAVE A MECHANIC ON DUTY

ZACH OIL CO.
(402) 375-2121 • 310 South Main • Wayne, NE

PICK UP YOUR FREE REWARDS CARD

The more you shop, the more prizes you win!

Bud & Bud Light
24 Pack Cans \$19.19

Natural Light
30 Pack Cans \$15.99

efusion Acai Berry Energy Drink w/Caffeine

603 Main Street
Wayne, NE 68787
375-9982 375-4151

Sinclair DAYLIGHT DONUTS

Motorola Barrage™

Don't be afraid of getting dirty with the new Motorola Barrage. Barrage is Mil-Spec 810F certified to withstand extreme temperatures, dust shock, and more. It can even be submerged in up to 1 meter of water for up to 30 minutes. This extreme durability, combined with a Best-In-Class PTT Experience, ensures you stay productive and in-touch regardless of the conditions.

\$129.99
(after \$50 mail in rebate)

Stop In and Register for a LG enV® TOUCH Phone

verizonwireless

ULTIMATE COMMUNICATIONS

110 E. Broadway Street Randolph, NE 402-337-0156 • 800-378-0156

212 N. Broadway Street Hartington, NE 402-254-9550



Laurel-Concord girls fall to Crofton 62-32

LAUREL - Laurel-Concord's girls tried to keep pace with an always-tough Crofton team, but the Lady Warriors pulled away in the fourth quarter to take a 62-32 win Friday in the season opener for both teams.

Laurel-Concord trailed for much of the game, but were still in contention trailing 41-29 going into the final period. The Warriors got tough on defense in the final eight minutes and quickly quashed any hopes of a Lady Bear comeback.

"They're just a solid team all around," coach Nate Sims said. "They're one of those teams that don't make a lot of mistakes, and you have to try and match that. We just had a lack of execution that caught up to us and the game got away from us."

Bethany DeLong led a balanced Laurel-Concord effort with nine points, while Ashley Lunz added eight points. Also scoring were Jade Cunningham with six, Mandy

Nelson with five and Emily Gubbels with four.

"We'd like to try to do that as much as possible," Sims said of his team's balanced attack. "But we'd like to score more than we did, obviously. Crofton was a good defensive team and they make you work for what you get, so it was a struggle."

The Lady Bears will look to get in the win column on Saturday when they travel up the road to Randolph.

"We just need to improve across the board," Sims said. "We weren't very sharp defensively and weren't quick enough with the ball, but those are mistakes that can be fixed and it will be up to us to get that done this week."

Crofton 62, Laurel-Concord 32
 Crofton 15 14 12 21 - 62
 Laurel-Concord 9 8 12 3 - 32
LAUREL-CONCORD - DeLong 9, Lunz 8, Cunningham 6, Nelson 5, Gubbels 4.
CROFTON - R. Steffen 14, Sanger 13, N. Guenther 6, J. Guenther 6, Arens 6, Hegge 5, K. Steffen 5, Tramp 4, Miller 3.

Wayne wrestlers pick up five medals at York Invite

YORK - The Wayne high wrestling team had its best opening-tournament performance in six years Saturday as the Blue Devils earned five medals and finished seventh at the York Invitational.

Taking just nine wrestlers to the team's first tournament of the season, the Blue Devils scored 73 points, the most they scored since winning the meet in 2003.

"Last year, I think we scored 20 points at this tournament, so I thought the kids wrestled pretty well," coach Anthony Lawrence said. "We didn't take the whole team in, but the kids we had in it performed well and we got five medals out of nine kids."

The Blue Devils had five wrestlers in the semifinals in the 12-team tournament, but had a rough semifinal round and saw all five drop to the consolation bracket. All five wrestlers won

their consolation semifinals to secure a medal, and three finished the day with wins in the consolation finals to finish third.

Logan Owens (140), Riley McManus (160) and Drew Loberg (189) finished the day as consolation champions, while fourth-place medals went to Aaron Luschen (152) and Jorge Dunklau (285).

The Blue Devils will see a lot of action this weekend at the Nebraska Duals Tournament, as they will compete in five dual matches each day of the two-day tournament that starts Friday in Columbus.

"We've got a big test coming up this week, so it will be interesting to see where we're at," Lawrence said.

Among the teams Wayne will wrestle are Class A teams Omaha Bryan and traditional powerhouse Millard South.

(Photo by Michael Carnes) Bethany DeLong (33) passes the ball to Audrey Kastrup (21) during Laurel-Concord's home loss to Crofton Friday. The Lady Bears are at Randolph on Saturday.

We Have Good News and We Have Better News!

Good News is circulation rates will not go up in 2010.

Better News is by renewing or subscribing to the Wayne Herald in December you will be put in a drawing for a chance to be 1 of 20 Lucky Winners!

For each renewal/new subscription, you will be automatically included in the drawing
 You may renew for an additional year to your existing expiration date

PRIZES WILL BE DRAWN FOR GIFT CERTIFICATES TO:
Pac 'N' Save • Quality Food Center • Sinclair • Fredrickson Oil
 Drawing will be held the morning of January 4th to be printed in the Morning Shopper
 No Purchase Necessary

Name _____ Charge to Visa or Mastercard
 Address _____ Visa _____ Mastercard
 City _____ State _____ Zip _____ Card # _____
 Phone Number _____ Name on card _____
 Exp. date _____

Enclose money (or credit card info) and send to:
The Wayne Herald
PO Box 70
Wayne, NE 68787

SUBSCRIPTION RATES:
\$44 for Area (Wayne, Pierce, Cedar, Dixon, Thurston, Cuming, Stanton or Madison Counties)
\$54 In-State • \$54 Out-State

Trojans open with 56-30 win

WAKEFIELD - The Wakefield boys basketball team did a good job taking care of the ball as it opened the season with a 56-30 win over Pender Thursday night.

The Trojans committed just 10 turnovers and added a solid defensive effort that helped them take a 16-point halftime lead and cruise to the easy win.

"I thought we played well defensively, and we had some shots fall and only had 10 turnovers, so it was a good win for us," coach Mike Clay said. "We were able to keep them to one shot and lay good defense."

Chad Clay had the hot hand for the Trojans, finishing with a game-high 23 points.

"Chad shot the ball well from the free throw line, which is good because he struggled at the line last year," Clay said.

The Trojans had good balance behind Clay, with Alex Schultz adding nine points and Chris Matias and Dusty Sherer each putting in seven.

"Dusty came in at center and did a nice job for us inside, and Chris is an undersized guy, but did a great job on the offensive glass and got several points off putbacks," Clay said.

Wakefield 56, Pender 30
 Wakefield 15 15 12 14 - 56
 Pender 6 8 11 5 - 30
WAKEFIELD - Soderberg 1 0-0 2, Bodlak 1 2-4 4, Ortiz 2 0-2 4, Clay 7 8-11 23, Schultz 3 3-3 9, Matias 3 0-2 7, Sherer 2 3-4 7. **Totals 19 16-26 56.**
PENDER - Johnson 2 0-0 4, Nelson 7 1-1 16, Smith 2 2-5 6, Mailloux 2 0-0 4. **Totals 13 3-6 30.**

Keitges earns team award

Allen native Erin Keitges was named a co-most valuable runner by the Morningside cross country team as they announced their season-ending awards.

Keitges and Kara Nelson, who shared the honor with Keitges, led the Morningside women to their first-ever trip to the NALA national cross country meet this season.

Freshman boys lose first matchup

The Wayne freshman boys basketball team came up on the short end of a 48-29 decision to Norfolk Catholic in the team's season opener last week.

Danny Melena had nine points, Drew Carroll put in eight and Grant Anderson and Bradley Longe both scored six points for the Blue Devil frosh.

Eighth-grade girls come out on top

The Wayne eighth-grade girls basketball team easily defeated Hartington Cedar Catholic 40-17 in their first game of the year.

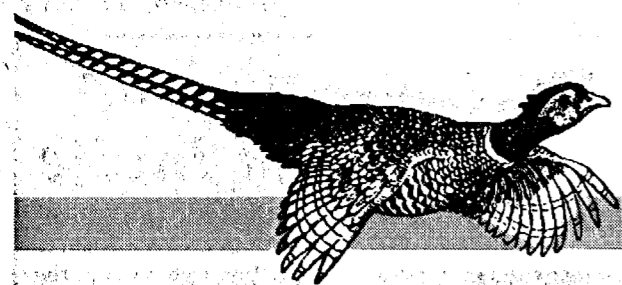
Ashton Schweers had 12 points and Victoria Kranz added eight for the winners.

Seventh-graders win one, lose one

The Wayne seventh-grade girls team won one and lost one in recent action.

On Saturday, Wayne edged Pierce 27-26 with Skyler Gamble's 13 points leading the way. Rachel Rauner also finished in double figures with 10 points, while Alyssa Schmale and Emma Evetovich each had two.

On Monday, West Point Central Catholic defeated Wayne 34-16. Rauner had six points and Schmale added three to lead Wayne. Alyssa Schmale, McKenzie Rusk and Sydney McCorkindale all had two points and Gamble added a free throw.



Letters

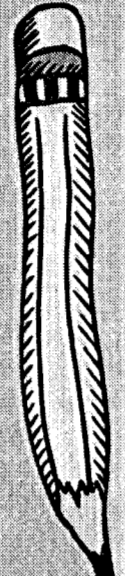
Find nativities here in Wayne

I am writing in response to Holly (Wedekind) Torres' letter to the editor of Dec. 3, who could not find a nativity at Wal-Mart, Target or ShopKo.

in Wayne. We are the people who sit next to you in church and at sports events, and spend our money at the local grocery stores and advertise in the local paper.

Letters Welcome

Letters from readers are welcome. They should be timely, brief (no longer than one type-written page, double spaced) and must contain no libelous statements.



Capitol View

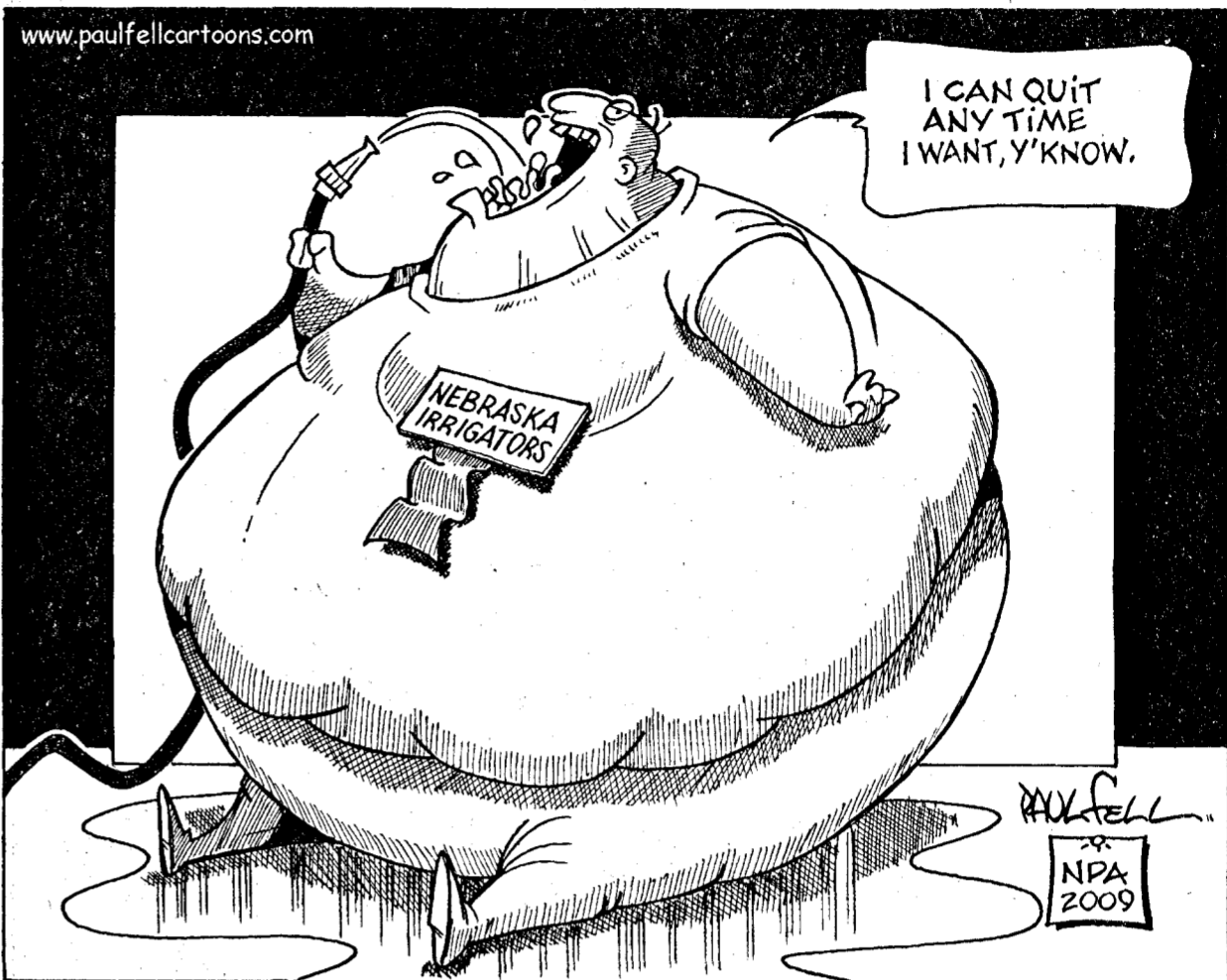
How to handle the holidays

By ED HOWARD Statehouse Correspondent The Nebraska Press Association

LINCOLN - Ah, the Christmas season. Family gatherings abound. All those hugs and smiles at the door. "Look how you've grown!" is a common pleasantry, so long as it's directed to your sister's little boy, and not your sister.

The catching up among siblings, the next generation, in-laws and outlaws may eventually subside. That's when trouble might come sliding down the chimney, so to speak.

Seldom have various levels of our government cooperated, or colluded, to provide so much fodder for the holiday roundtable. Government and politics and Nebraska football will certainly come up in lots of happy homes.



those morons in Washington are doing with this healthcare thing. Those @&#****!!" Answer: "Well, I just hope Congress and the president will find a way to just do what's best for the country.

for the country. We all want what's best for our nation. I certainly do!" "The Big 12 Championship game was really something! What did you think of the way Pelini called plays? And our defense! Whaddya say about how those guys played? Huh?"

dearest up!" There remains the unfortunate possibility that things may get out of hand. Hollering turns to screaming. A falling out turns to fisticuffs.



Don't get me started

By: Michael Carnes Managing Editor

When did Tiger find the time to play golf?

Around the world in 800 words or less...it's the overdue purging of the "Bits and Pieces" file: - From the "Holy cow...when did he have time to play golf?" folder: A recent report noted that there are at least (as of Monday evening) 10 women linked to pro golfer Tiger Woods in the recent discovery of his adulterous affairs.

to put our health in the hands of the buffoons on both sides of the aisle in Congress who can't balance a budget. - Do your parents still call to check on your whereabouts? I'm 43 years old, and every now and then I'll get a call from my mom, who seems to think her son still needs to be told what to do.

Schools recognized for parental involvement

By DAVE HEINEMAN Nebraska Governor Dear Fellow Nebraskans, Recently the Nebraska Association of School Board and I honored four school districts with the 2009 Governor's Education Initiative Award for Parental Involvement.

of traditional approaches such as take home packets for elementary students, open houses, and special programs like Family Literacy Night. Sutherland schools also invite parents to be part of the school day by visiting classrooms and helping teachers throughout the year.

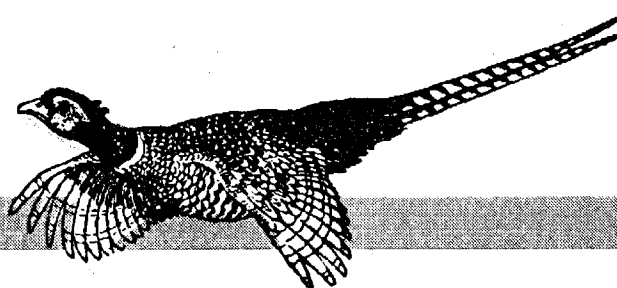
recognized for an after school program that is an effective way to involve parents. Parents are invited to talk with students about hobbies and interests, such as a biology professor and parent volunteering to lead science experiments with after school participants.

The Millard Public School District was honored for using a program that helps teachers and parents track the character development of every student. Research has identified 40 traits correlating to academic success in young people.

Got News? 402-375-2600 800-672-3418 News: Clara Osten clara@wayneherald.com Sports/Man. Ed.: Michael Carnes sports@wayneherald.com Publisher: Kevin Peterson kevin@wayneherald.com Website: www.mywaynenews.com

Court News

The Wayne Herald



Property Transfers

Nov. 3: Judy A. Dittrich to Amanda J. Petersen and Jeremy G. Strong. Lot 7, Block 4, Bressler & Pattersons First Addition of Winside. \$213.75.

Nov. 3: Hazel L. Everett Trust, Marcheta L. Lutt, Trustee to Howard and Barvetta McLain Trust, Howard A. McLain Trustee and Barvetta L. McLain Trustee. Lot 9, Block 2, Marywood Subdivision of Wayne. \$281.25.

Nov. 3: Frieda Viola Raabe to Barry L. Parsons. Part of the SE 1/4 of the NE 1/4 of Section 19, Township 25, Range 1. \$148.50.

Nov. 3: Orville Raabe, Jr., Carol N. Raabe and Barbara Ann Hill to Barry L. Parsons. Part of the SE 1/4 of the NE 1/4 of Section 19, Township 25, Range 1. Exempt.

Nov. 4: Adolph A. Hingst Living Trust, Alan J. Hingst Trustee and Karla L. Frey Trustee to Karla L. Frey. Lot 6A Sunrise Cove Addition, Administrative Subdivision of Lot 6, Block 1 of Wayne. \$56.25.

Nov. 4: Karen D. Wichman Revocable Trust, Barbara J. Bessmer Trustee and Bruce A. Wichman Trustee to Bruce A. Wichman. The E 1/2 of the NE 1/4 of Section 27, Township 25, Range 5. Exempt.

Nov. 4: Norman C. Wichman Revocable Trust, Barbara J. Bessmer Trustee and Bruce A. Wichman Trustee to Bruce A. Wichman. The E 1/2 of the NE 1/4 of Section 27, Township 25, Range 5. Exempt.

Nov. 4: Norman C. Wichman Revocable Trust, Barbara J. Bessmer Trustee and Bruce A. Wichman Trustee to Bruce A. Wichman and Byron D. Wichman Trust Beneficiary. The NE 1/4 of Section 21, Township 25,

Range 5. Exempt.

Nov. 4: Karen D. Wichman Revocable Trust, Barbara J. Bessmer Trustee and Bruce A. Wichman Trustee to Barbara J. Bessmer, Bruce A. Wichman and Byron D. Wichman Trust Beneficiary. The NE 1/4 of Section 21, Township 25, Range 5. Exempt.

Nov. 4: Barbara J. Bessmer, Terry P. Bessmer, Bruce A. Wichman, Nancy Wichman, Karen D. Wichman Revocable Trust, Bruce A. Wichman Trustee and Barbara J. Bessmer Trustee to Bruce A. Wichman. The N 1/2 of the NE 1/4 of Section 21, Township 25, Range 5. Exempt.

Nov. 4: Bruce A. Wichman and Nancy Wichman to Barbara J. Bessmer. The N 1/2 of the NE 1/4 of Section 21, Township 25, Range 5. \$567.

Nov. 4: Harold L. Brudigan and Patricia A. Brudigan to John W. Brudigan, Joan L. Brudigan and Jill A. Sabol. Part of Lot 1, 2, 3 and 4, Block 4, Original Town of Hoskins. Exempt.

Nov. 4: Christopher J. Connolly and Sheryl L. Connolly to Mark Gansbom and Laurie Gansbom. Part of Lot 3, Block 1, Muhs Acres of Wayne Area Subdivisions. \$288 (correction of earlier entry).

Nov. 4: Jordan Hellbusch and Jennifer Hellbusch to Alexander M. Thor and Heather J. Thor. Par of Lot 8, Taylors Addition of Wayne. \$258.75.

Nov. 4: Wayne Community Housing Development Corp to Michael J. Carnes. Part of Lot 8, 9, 10 and 11, Block 9, Crawford & Browns Addition of Wayne. \$141.75.

Nov. 5: Wayne Community Housing Development Corp. to Jamie A. Backstrom. Part of Lot 1 and 2, Block 5, John Lakes Addition of Wayne. \$117.

Nov. 9: Herbert E. Bose and Sharon M. Bose to Herbert E. and Sharon M. Bose Revocable Living Trust. The N 1/2 of the SE 1/4 of Section 16, Township 25, Range 2. Exempt.

Nov. 10: BankFirst to Ray D.E. McCalla and Rachelle L. McCalla. Lot 6 and part of Lot 5, Block 1, Crawford & Browns Addition of Wayne. \$168.75.

Nov. 10: Howard A. McLain and Barvetta L. McLain to Howard A. and Barvetta L. McLain Trust, Howard McLain Trustee and Barvetta L. McLain Trustee. Lot 1, Kavanaughs Sunrise Addition of Carroll. Exempt.

Nov. 10: Howard A. and Barvetta L. McLain Trust, Howard A. McLain Trustee and Barvetta L. McLain Trustee to Gordon E. French and Pamela F. French. Lot 1 and 2 Kavanaughs Sunrise Addition of Carroll. \$191.25.

Nov. 12: Tim Ryerson to Wayne Community Housing Development Corp. Lot 11, McPherrans Addition of Wayne. \$150.75.

Nov. 16: Dianne Leighty and Vincent J. Leighty to Philip P. Pfaltzgraff and Sherry L. Pfaltzgraff. Part of Lot 4, Block 2, Original Town of Wayne. \$121.50.

Nov. 18: Cheryl A. Meyer to Contance L. Kazovich. Lot 10 and 11, Lunds First Addition of Wakefield. \$326.25.

Nov. 18: Wayne Community Housing Development Corporation to Steven P. Biermann. Part of Lot 2, Block 5, Britton & Bressler Addition of Wayne. \$126.

Nov. 19: Clair L. Swanson and Leota M. Swanson to Amy A. Hill. Lot 1 and Outlot 1 Oak View Addition of Wayne. \$258.75.

Nov. 19: The Estate of Evelyn Turena Gradwohl to Marta L. Victor, Marcia L. Duering and Marlyce K. Bruning. The N 1/2 of the NE 1/4 of Section 12, Township 27, Range 2 and the SW 1/4 of Section 6 Township 27 Range 3. Exempt.

Nov. 20: Wayne Community Housing Development Corp. to Heidi Keller. Part of Lot 8, 9 and 10, Block 1, East Addition of Wayne. \$247.50.

Nov. 23: Wayne County Sheriff to the City of Wayne. Part of Lot 4, 5 and 6, Block 24, Original Town of Wayne. Exempt.

SW 1/4 of Section 7, Township 26, Range 4. \$6,561.

County Court Proceedings
Judge Richard W. Krepela presiding

On Nov. 30 the Wayne County Court heard 43 cases, including one failure to appear, five continuances, one felony hearing, 23 arraignments, two pretrials, four sentencing, three small claims trials, one civil hearing and three juvenile hearings. During the past two weeks, there were a total of 72 new cases filed and 22 traffic tickets. In addition there were 26 judgmental orders.

Criminal Dispositions

St. of Neb., pltf. vs. Corwin D. Toney, Wayne, def. Complaint for Burglary (count I) and Criminal Mischief (Count II). Case bound over to District Court.

St. of Neb., pltf. vs. Mercedes D. Huxtable-Mann, Winside, def. Complaint for Use of Tobacco by a Minor (Count I) and Littering (Count II). Sentenced to 30 hours of Community Service and ordered to pay costs.

St. of Neb., pltf. vs. Christopher T. Burkhard, Elkhorn, def. Complaint for Reckless Driving. Fined \$400 and costs.

St. of Neb., pltf. vs. Brian J. Wright, Wayne, def. Complaint for Procuring Alcoholic Liquor for a Minor. Fined \$750 and costs.

St. of Neb., pltf. vs. Michael J. Peterson, Hoskins, def. Complaint for Intimidation by Telephone Call. Fined \$200 and costs on complaint of Disturbing the Peace.

Civil Proceedings

Credit Management Services, Inc. pltf. vs. Grant Hurlbert, Winside, def. \$3,167.21. Judgment for the pltf. for \$3,167.21 and costs.

Credit Bureau Services, Inc., pltf. vs. Trudy Eberhardt, Wayne, def. \$240. Judgment for the pltf. for \$72.86.

Credit Management Services, Inc., pltf., vs. Robert Knudsen and Miriam Knudsen, Wayne, defs. \$503. Judgment for the pltf. for \$503 and costs.

Donya Langenberg, pltf., vs. Karne Hoagland, Shoemakersville, Penn, def. \$1,500. Judgment for the pltf. for \$1,500 and costs.

Traffic violations

Melissa Murphy, Wayne, no valid reg., \$73; Gary Manning, Bennington, no valid reg., \$73; Rhonda Whitney, Norfolk, spd., \$123; Shon King, Norfolk, spd. and no valid reg., \$145; Larry Hessling, Howells, spd., \$120; Martha

Roman-Perez, O'Neill, spd., \$123; Michael Wurdinger, Stanton, spd., \$173; Robert Anderson, Hubbard, spd., \$123.

Curtis Tumbs, Wakefield, spd., \$123; Glenn Ridder, North Sioux City, S.D., spd., \$73; Mary Bartels, Belden, spd., \$73 Blaine Bockelman, Pierce, \$123; Monte Hobelman, Lincoln, spd., \$73; Michael Kieley, Wayne, spd., \$173; Daniel Negengast, Chanute, Kan., spd., \$73; Miriam McGraw, Norfolk, spd., \$123; Kevin Clausen, Sioux City, Iowa, spd. and no valid registration, \$148.

Allery Brommer, Norfolk, spd., \$125; Riley Hoffart, Wayne, spd., \$123; Darrel Rahn, Wayne, spd., \$123; Kent Behr, Sioux City, Iowa, no valid reg., \$73; Kimberly Reinhardt, Cheyenne, Wyo., illegal u-turn, \$73; Brendan Westcott, Norfolk, spd., \$123; Madalyn Shea, Omaha, spd., \$73; Ashanti Zuri, Omaha, spd., \$73.

Jorge Navarro, Norfolk, spd., \$248; Jorge Sanchez, Wakefield, no oper. lic., \$123; Megan Furgison, Greeley, spd., \$123; Adelaido Fuentes Ardiano, Schuyler, no oper. lic., \$123; Jorge Funes, Madison, no oper. lic., \$120; Juan Rosadorias, Milan, Mo., no valid reg., driving left of center, \$98.

District Court
Criminal proceedings
 Nov. 4, 2009

State of Nebraska vs. James Wimsatt Jr of Stanton. Count I, Attempted Terroristic Threats, sentenced to 1-1 year in Penitentiary and pay court costs of \$114.50.

Civil proceedings
 Nov. 4, 2009

Eric Haglund of Wakefield vs. Kayla Haglund of Laurel. Dissolution of Marriage.



Nov. 23: Ronald Hammer Living Trust, Janice Hammer Successor Trustee Janice Hammer Living Trust Janice Hammer Trustee to Leona S. Hammer Revocable Living Trust, Roger Hammer Trustee and Janice Johnson Trustee. Part of the SW 1/4 of Section 26, Township 26, Range 4. Exempt.

Nov. 23: Leona S. Hammer to Leona S. Hammer Revocable Living Trust, Roger Hammer Trustee and Janice Johnson Trustee. Part of the SW 1/4 of Section 26, Township 26, Range 4. Exempt.

Nov. 23: Leona S. Hammer Revocable Living Trust, Roger Hammer Trustee to Douglas J. Spahr and Connie S. Spahr. Part of the SW 1/4 of Section 26, Township 26, Range 4. \$454.50.

Nov. 23: Wayne Community Housing Development to Carrie A. Walton. Lot 11, McPherrans Addition of Wayne. \$153.

Nov. 24: Pentagon Development, LLC to Craig M. Walling and Jill N. Walling. Lot 7, Fairway Estates of Wayne. \$90.

Nov. 25: Missionary Benedictine Sisters, Inc. to Providence Medical Center. Part of the NE 1/4 of the

Nov. 23: Ronald Hammer Living Trust, Janice Hammer Successor Trustee Janice Hammer Living Trust Janice Hammer Trustee to Leona S. Hammer Revocable Living Trust, Roger Hammer Trustee and Janice Johnson Trustee. Part of the SW 1/4 of Section 26, Township 26, Range 4. Exempt.

Nov. 23: Leona S. Hammer to Leona S. Hammer Revocable Living Trust, Roger Hammer Trustee and Janice Johnson Trustee. Part of the SW 1/4 of Section 26, Township 26, Range 4. Exempt.

Nov. 23: Leona S. Hammer Revocable Living Trust, Roger Hammer Trustee to Douglas J. Spahr and Connie S. Spahr. Part of the SW 1/4 of Section 26, Township 26, Range 4. \$454.50.

Nov. 23: Wayne Community Housing Development to Carrie A. Walton. Lot 11, McPherrans Addition of Wayne. \$153.

Nov. 24: Pentagon Development, LLC to Craig M. Walling and Jill N. Walling. Lot 7, Fairway Estates of Wayne. \$90.

Nov. 25: Missionary Benedictine Sisters, Inc. to Providence Medical Center. Part of the NE 1/4 of the

TOPS group meets in Wayne

TOPS NE 0200 met Dec. 2 in the Providence Medical Center Boardroom with 11 TOPS and three KOPS members present.

Sherie Lundahl was the TOPS Best Loser and received her coupon. Members adjourned to the Coffee Shoppe where they celebrated our Christmas party and revealed our Secret Sisters.

Anyone seeking more information about TOPS, Inc. is welcome to visit the group any Wednesday evening at 6:15 p.m.

New material obtained by Wayne Public Library

The following is a list of material recently obtained by the Wayne Public Library.

JUV NON-FICTION

Ziefert, Harriet - You can't taste a pickle with your ear.

INTERMEDIATE

Burg, Shana - A thousand never evers; Cabot, Meg - Best friends and drama queens; Cabot, Meg - Moving day; Cabot, Meg - The new girl; DiCamillo, Kate - The magician's elephant; DiCamillo, Kate - Mercy Watson thinks like a pig; Kinney, Jeff - Diary of a wimpy kids: dog days; Meyerhoff, Jenny - Third grade baby; Pearson, Ridley - Steel Trapp: the challenge; Sage, Angie - Syren; Stewart, Trenton Lee - The mysterious Benedict Society and the prisoner's dilemma; Wight, Eric - Frankie Pickle and the closet of doom.

YOUNG ADULT

Bartoletti, Susan - The boy who dared; Bauer, Joan - Peeled; Cabot, Meg - Forever princess; Supplee, Suzanne - Artichoke's heart; Varrato, Tony - Fakie; Fox, Annie - Be confident in who you are; Fox, Annie - Real friends vs. the other kind; MacLeod, Brittany - 113 things to do by 13.

BOOKS ON CD

Alcott, Louisa May - Little women; Atwood, Margaret - Year of the flood; Cussler, Clive - Spartan gold; Doctorow, EL - Homer and Langley; Funke, Cornelia - Inkheart; Howe, Katherine - The physics book of Deliverance Dane; Kleypas, Lisa - Tempt me at twilight; McCall, Smith, Alexander - Tea time for the traditionally built; Oates, Joyce Carol - Little bird of heaven; Woods, Stuart - Hothouse orchid; Krakauer, Jon - Where men win glory.

DVDs

Twilight Zone Season 1; Pandas in the Wild ; Beginning cheerleading; Oliver; The sound of music; Free Willy; Hercules; Thomas and the really brave engines; American legends; Drums along the Mohawk; Operation Petticoat; Driving Miss Daisy; Nights in Rodanthe; It's the Great Pumpkin, Charlie Brown; A Charlie Brown Thanksgiving; A Charlie Brown Christmas.

PARENTING CORNER

Kroll, Virginia - Forgiving a friend; Kroll, Virginia - Good citizen Sarah - Kroll, Virginia - Cristina keeps a promise; Kroll, Virginia - Ryan respects; Kroll, Virginia - Makayla cares about others; Kroll, Virginia - Honest Ashley; Kroll, Virginia - Good neighbor Nicholas - Kroll, Virginia - Jason takes responsibility.

Catch the Holiday Spirit!
Join Us For Fun, Food and Prizes!
Fun, Food and Prizes!
 • 2 p.m. — Free Tom & Jerry's and snacks
 • 4 p.m. — \$5 Match Plays
 • 6 p.m. — Hot Seat Stacking Stuffers

At approximately 9 p.m., we will be drawing for a 42-inch flat screen TV and other prizes!

1106 South Main Street
Emerson, NE
(402) 695-0180

Owned and Operated By
 The Winnebago Tribe of Nebraska.
 No one under 18 allowed in casino area.
 Must be 21 years of age to play.

Wrap up new bedding for the holiday!

Pacific Coast Feather Outlet Store

Compare Everyday Outlet Store Prices - 50% or More Below Retail Stores!

COMFORTERS ~ BED PILLOWS ~ MATTRESS PADS ~ FEATHERBEDS ~ SHEET SETS ~ PILLOW CASES ~ DUVET COVERS ~ PILLOW SHAMS ~ BEDSKIRTS ~ PILLOW PROTECTORS & MORE!

Open this Saturday-December 12th!
9 am to 3 pm

Industrial Way is under construction! Please turn north on Centennial Rd from Hwy 35, go 3 tenths of a mile, then turn east to Pacific Coast Feather. Follow the signs. Park in the employee parking lot and use the back door to the store. We are sorry for any inconvenience.

Check Out the Special Holiday Sale Prices and Register to win a down comforter to be given away Dec. 18th

Special Store Hours for the Holidays:
 Closed Thursday & Friday, December 24th & 25th
 Open Thursday, December 31st 10 am to 2 pm
 Closed Friday & Saturday, January 1st & 2nd

Store Hours: Thursday & Friday 10 am-6 pm

402-375-8350
 1810 Industrial Way
 East Hwy 35, Wayne, NE

Ameriprise Financial

REMEMBER WHEN THE ONLY RETIREMENT QUESTION YOU HAD WAS WHEN?

It's time for a New Perspective

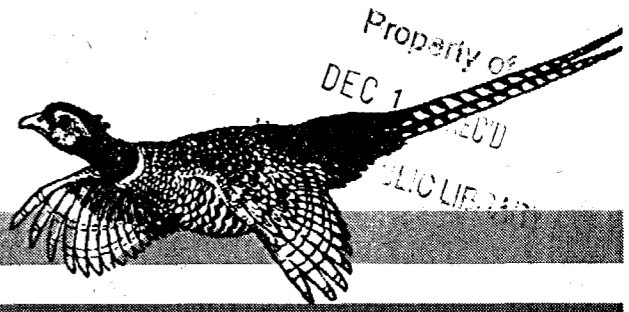
Call **(402) 833-5285** today to arrange your complimentary review.

Jennifer S. Carmer Phelps, CFP®, ChFC®, MBA
 Senior Financial Advisor
 120 W. 2nd Street
 Wayne, NE 68787
 (402) 833-5285
 Toll Free: (866) 433-5285
 Jennifer.S.Phelps@ampf.com

Financial planning services and investments available through Ameriprise Financial Services, Inc. Member FINRA and SIPC. Your meeting will include a review of your existing financial situation and potential opportunities, gaps, or general strategies. You will not receive a comprehensive review or financial planning services for which fees are charged. ©2009 Ameriprise Financial, Inc. All rights reserved.

Lifestyle

The Wayne Herald



Keep moving during winter months

Don't let those extra pounds creep up this winter. Be sure to keep moving. Finding ways to stay physically active during the cold winter months can be challenging. But



Kim Bearnese
Extension Educator

don't let it stop daily exercise. Continuing to exercise during winter will help prevent weight gain that can cause panic come spring and summer.

Holiday meals and less outdoor activity time can cause extra weight to sneak up very quickly. Being physically active isn't all about preventing weight gain, it also may help boost the immune system and control holiday stress.

What does one do for exercise when bicycling, jogging and rollerblading are out of the question? When it starts snowing, get creative. Bundle up, dress in warm layers and go for a walk or try sledding. Try making a snow angel or have a snow ball fight. One is never too old to have fun in the snow.

If the thought of going out in the cold does not sound appealing, consider working out at home. With the purchase of a few workout

DVDs and a few weights, one can have a nice home gym. Depending on the budget, a new or used treadmill or stair-stepper also can help. Get up 30 minutes early and watch the morning news while sweating away the pounds.

Another idea is to join the local gym. This has a whole slew of benefits, from the vast array of weights and aerobic equipment available, to the yoga or spinning classes and the indoor pool.

If being physically active 30-60 minutes every day seems like too much, little bouts of exercise throughout the day can be just as beneficial for as a full 30 minute workout routine. Think of taking the stairs instead of the elevator, or going for a walk after lunch and dinner. Driving to the mall and walking inside is also an option if the weather is blustery outside.

Set a goal during the cold winter months to be physically active at least 30-60 minutes most days of the week. This will help improve your health and mood throughout the winter season.

Senior Center Congregate Meal Menu

(Week of Dec. 14 - 18)

Meals served daily at noon.

For reservations, call 375-1460. Each meal served with bread, 2% milk and coffee.

Monday: Sliced pork, baked beans, dill buttered carrots, dinner roll & Promise, sliced peaches.

Tuesday: Turkey Divan, stewed tomato, cottage cheese, sliced bread & Promise, tropical fruit.

Wednesday: Special luncheon: Beef pot pie with biscuit, cauliflower, crackers & Promise, peach cobbler.

Thursday: Sliced turkey & gravy, stuffing, beets, mandarin oranges, sliced bread & Promise, chocolate pudding parfait.

Friday: Creamed ham over biscuit, celery stick, orange slices, sliced bread & Promise, brownie.

Briefly Speaking

Winter Bridge played at Senior Center

AREA — The Winter Bridge group met on Tuesday, Dec. 8 at the Wayne Senior Center with eight persons attending. Bridge was played at two tables. Hostesses were Arlene Ostendorf and Lois Jech.

Bridge will be played on Tuesday, Dec. 8. For reservations, contact hostesses Jerry Sharpe at 375-3855 or Kathy Johnson at 375-4525.

School Lunches

ALLEN (Dec. 14 - 18)

Monday: Breakfast — Cereal, Long Johns. Lunch — Spaghetti, meat sauce, green beans, peaches, garlic bun.

Tuesday: Breakfast — Biscuits & gravy. Lunch — Chef salad, lettuce, cheese, meat, onion, green peppers, carrots, celery, crackers, jell-o, tea roll.

Wednesday: Breakfast — Cereal & yogurt. Lunch — Pizza, lettuce, mandarin oranges, brownie.

Thursday: Breakfast — Pop tarts. Lunch — Turkey, mashed potatoes, gravy, cranberry sauce, sweet potatoes, apple crisp, ice cream, roll.

Friday: Breakfast — Cereal & French toast. Lunch — McRib, bun, tater tots, slushes, carrots, celery.

Milk served with breakfast and lunch. Menu subject to change.

LAUREL-CONCORD (Dec. 14 - 18)

Monday: Breakfast — Cereal & toast. Lunch — Fish sticks, macaroni & cheese, pudding, fruit, vegetable.

Tuesday: Breakfast — Breakfast pizza. Lunch — Hot ham & cheese on a bun, chips, fruit, vegetable.

Wednesday: Breakfast — Pancakes. Lunch — Christmas dinner.

Thursday: Breakfast — Omelet & toast. Lunch — Barbecue rib patty with bun, potato wedges, fruit, vegetable.

Friday: Breakfast — Donuts. Lunch — Chicken nuggets, bread, cookie, fruit, vegetable.

Fruit, vegetable and milk (white or chocolate) served daily. Orange juice sold daily.

All menus subject to change.

WAKEFIELD (Dec. 14 - 18)

Monday: Barbecue pork sandwich, corn, peaches.

Tuesday: Turkey melts, green beans, cherry salad.

Wednesday: Pizza, broccoli, chocolate chip cookies, pears.

Thursday: Creamed chicken, mashed potatoes, dinner roll, fruit salad.

Friday: Mini corn dogs, mixed vegetables, homemade buns, bananas.

Milk is served with every meal.

WAYNE (Dec. 14 - 18)

Monday: Breakfast sandwich, tater rounds, orange, pancakes.

Tuesday: Creamed turkey, mashed potatoes, dinner roll, peaches, cookie.

Wednesday: Cheeseburger with bun, green beans, applesauce, cookie.

Thursday: Mini corn dogs, bread sticks with sauce, peas, blueberries, yogurt.

Friday: Pizza, lettuce, pears, chocolate chip bar.

Milk served with every meal.

WINSIDE (Dec. 14 - 18)

Monday: Breakfast — Pancake. Lunch — Popcorn chicken, mashed potatoes, green beans, roll.

Tuesday: Breakfast — Muffin. Lunch — Mini corn dogs, mashed potatoes, blushing pears, roll.

Wednesday: Breakfast — French toast. Lunch — Sweet & sour chicken, rice, peas, fruit cocktail, roll.

Thursday: Breakfast — Cereal. Lunch — Turkey, stuffing, mashed potatoes, green beans, roll.

Friday: Breakfast — Scrambled eggs. Lunch — Pizza, corn, peaches, milk.

Menu may change without notice.

Fresh fruit daily.

Grades 4-12 may have salad bar. Grades K-3 may have salad plate.

Senior Center Calendar

(Week of Dec. 14 - 18)

Monday, Dec. 14: Morning walking; Quilting and cards; Wayne High School Jazz Choir under the direction of Tracy Anderson; Pool, 1 p.m.


Tuesday, Dec. 15: Morning walking; Quilting and cards; Bridge; Val Koeber, Christmas songs.

Wednesday, Dec. 16: Morning walking; Health screens, 9:30 a.m. to noon; Pamper yourself, 9:30; Special luncheon, noon; Wayne Second grade students under the direction of Monica Jensen, 1 p.m.

Thursday, Dec. 17: Morning walking; Quilting and cards; Bridge; Pitch party, 1:15 p.m.

Friday, Dec. 18: Morning walking; Quilting and cards; Christmas organ music with Connie Glassmeyer; Pool, 1 p.m.; Bingo, 1:15.

We Specialize in Preventative Family Dentistry *We Care!*



Dr. Rob Burrows
115 West 3rd Street • P.O. Box 217
Wayne, NE 68787
(402)-375-1124

In Kneads Massage

Heidi L. Ankeny, L.M.T.
402-375-8601
111 Main Street Street • Wayne, NE 68787



Gift Certificates Available
Call For An Appointment!

Good News if you have Varicose Veins!

Varicose veins are not always a cosmetic issue.



Varicose veins frequently force people to dramatically change their lifestyles, especially when they have standing professions and can no longer tolerate being on their feet all day.

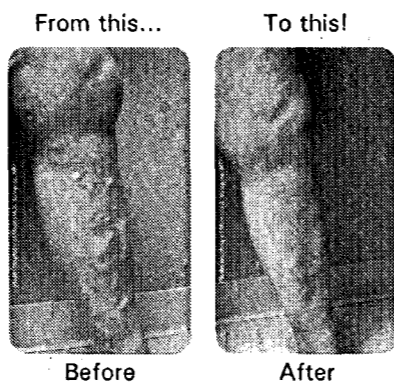
VNUS Closure® is a new solution to relieve the discomfort, swelling and appearance of varicose veins.

- Minimally invasive.
- Back to normal activity usually by the next day.
- Covered by most insurance plans.

Call (402) 844-8284 to schedule a consultation with a cardiovascular surgeon at Faith Regional CardioVascular Institute.



Cardiovascular Services




My Wish List at Swans

- leather coat
- long warm housecoat
- active-wear set
- scarf and glove set
- fashion hat or boots
- sweater or vest
- a gift certificate

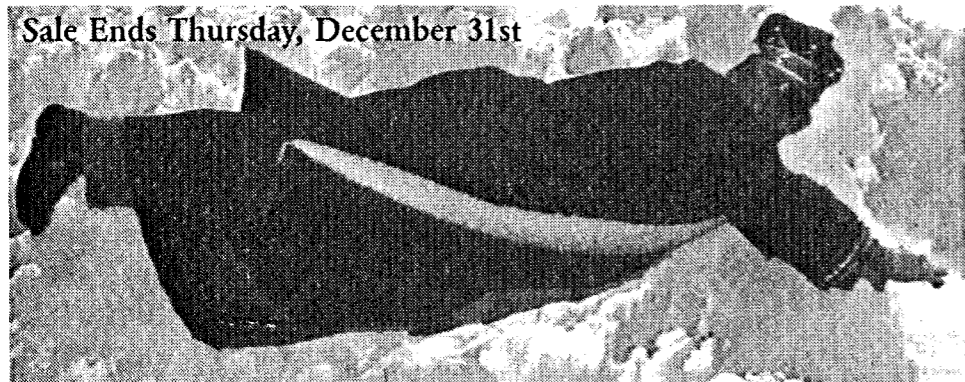
Stop in at Swans and complete your wish list and receive a special "Thank You" gift from us.

Hours:
M-T-W-F 9-5:30
Thurs. 9-7 • Sat. 9-5
205 Main St., Wayne, NE
Phone 375-1511
www.swansapparel.com




Super King Sale Continues at the Diamond Center

Sale Ends Thursday, December 31st



Interchangeable Stone Rings with Extra Stones
80% to 90% OFF Must See!!

Love Link Beads Purchase One, Get One FREE

All Other Jewelry Items MARKED DOWN!

Citizen and Seiko Watches
25% OFF
Fossil Watches
40% OFF

All Clocks SALE PRICED

14 Karat Neck Chains, Bracelets and Ankle Bracelets **50% OFF**
All Pearl Jewelry **10% to 70% OFF**
Omega Neckpieces and Slides **10% to 70% OFF**
Sarah's Hope Jewelry **20% OFF**
Peggy Karr, Mikasa, Picture Frames Up to **50% OFF**

Diamond Engagement Rings, Wedding Bands and Fashion Rings
10% to 70% OFF

Colored Gemstone Rings **10% to 70% OFF**
Many Styles **50% OFF**
Diamond Earrings and Pendants
10% to 70% OFF

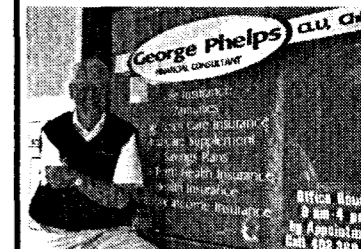
Colored Gemstone Pendants & Earrings
10% to 70% OFF
Most Styles at Least **50% OFF**

The Diamond Center / Flowers & Wine

221 N. Main • Wayne • 402-375-1804 • 402-375-3747
flowerswine.com diamondking.biz

Will you be able to retire and stay retired?

With all of the uncertainty in the financial markets, many of us are concerned about the safety of our savings. Annuities by Allianz Life Insurance Company offers: **safety of principle, income you can't out live and a competitive rate of return.** Ask about our **8% guaranteed rate of return for 10 years.** Allianz Life Insurance of NA, 5701 Golden Hills Dr., Minneapolis, MN 55416 www.allianzlife.com

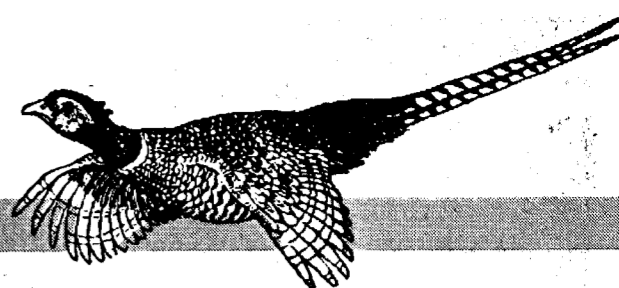


George Phelps CFP, CLU, ChFC
Mineshaft Mall, 112 East 2nd
Wayne, NE • 402-369-1818

Annuities are subject to surrender charges, which could result in a loss of principal and credited interest if the contract is surrendered prematurely. Guarantees are backed by the financial strength and claims-paying ability of Allianz Life Insurance Company of North America.

Faith

The Wayne Herald



Church Services

Wayne

CALVARY BIBLE EVANGELICAL FREE
502 Lincoln Street
(402) 375-4946

website: www.cbefc.org
email: calvarybible@gmail.com
(Tim Pearson, Senior Pastor)
(Josh Meyers, Youth Pastor)
Sunday: Prayer meeting, 9 a.m.; Church School, 9:30; Worship service, 10:30 a.m.; Youth Group, 6:30 p.m. Wednesday: Second and fourth Wednesday of the month, Youth Group for grades 7-12, 6:30 p.m.

FAITH BAPTIST
Independent - Fundamental
208 E. Fourth St. -
375-3413

(Pastor Jim Scallions)
Sunday: Sunday school, 10 a.m.; Worship, 11; Evening worship, 7:30 p.m. Wednesday: Bible Study and prayer, 7:30 p.m.

FIRST BAPTIST
400 Main St.
375-3608
(Douglas Shelton, pastor)
Sunday: Sunday School, Adult and children's classes, 9:15 a.m.; Prayer and Fellowship, 10:15; Worship, 10:30. Wednesday: Bible study, 7 p.m.

FIRST PRESBYTERIAN
216 West 3rd St.
375-2669
(Rev. Ray McCalla, pastor)
www.spewayne.org
Sunday: Christmas Band

rehearsal, 8:45 a.m.; Church school Christmas program rehearsal, 9 a.m.; Worship with Communion, 10; Potluck dinner, 11:30. Wednesday: All are asked to meet at church to go Christmas caroling, 5 p.m.; Following caroling, a soup supper will be served at church.

FIRST TRINITY LUTHERAN
Altona, LC-MS
57741 847th Road, Wayne
Altona Office (402) 375-2165
(Rev. David Ohlman, Pastor)
Pilgr Office (402) 396-3478
Mobile (260) 402-0035
Friday: LWML Christmas luncheon and party at Altona, noon. Sunday: Sunday School, nursery through adult, 8:30 a.m.; Divine Worship, 9:30. Wednesday: Joint Confirmation Instruction at First Trinity, 5:45 p.m.; Joint Advent worship at First Trinity of Altona, 7:30 p.m.

FIRST UNITED METHODIST
6th & Main St.
(Rev. Doyle Burbank-Williams, pastor)
Sunday: Third Sunday of Advent. Worship Services, 9:30 and 11 a.m.; Sunday School, 9:30; United Methodist Women, 9:30; Fellowship time, 10:30; Sunday School Christmas Program, 11; Financial Peace University, 2 p.m. Monday: Newsletter deadline. Tuesday: Girl Scout Troop #191, 5:15 p.m. Wednesday: Wedding rehearsal, 9 a.m.; Wedding, 6:30 p.m. Thursday: Habitat for Humanity at First United Methodist Church, 7 p.m. Friday: EWOCK, 6:30 p.m.

GRACE LUTHERAN
Missouri Synod
904 Logan
grace@gracewayne.com
(The Rev. Carl Lillenkamp, Senior Pastor)
(The Rev. John Pasche, Associate pastor)
(Stephen Ministry cong.)
Sunday: Lutheran Hour on KTCH, 7:30 a.m.; Worship with Holy Communion, 8 and 10:30 a.m. Sunday School, 9:15; Bible Study, 9:30; Sunday School Program Practice, 12:15 p.m.; LYF meeting and caroling, 4. Monday: Worship, 6:45 p.m.; Mission Council, 7:30. Tuesday: Evening Circle, 7:30 p.m. Wednesday: Men's Bible Study, 6:30 a.m.; Bible Class, 9; Advent Supper, 6 p.m.; Midweek, 6:30; Choir, 7; Stephen Ministry, 7; Advent Worship, 7:30. Thursday: Bell Choir, 6 p.m.; The Grind, 7.

JEHOVAH'S WITNESSES
Phone 375-2631 or 375-3427 for information

JOURNEY CHRISTIAN CHURCH
1110 East 7th St.
www.journeychristianonline.org.

375-4743
(Troy Reynolds, minister)
(Justin Raulston, minister of involvement)
Sunday: Christians Hour on KTCH, 8:45 a.m.; Prayer Group, 8:45; Sunday School for all ages, 9; Worship, 9 and 10:30 a.m.; Children's Church, 10:30. Small group, 6:30 p.m. (call church office for meeting details); Life Group at various homes, 7.

OUR SAVIOR LUTHERAN
421 Pearl St. • 375-2899
(Pastor Kim Stover)
oslc@oslcwayne.org
Saturday: Prayer Walkers, 8:30 a.m.; Christmas Program Rehearsal, 11; Holiday movie, 1 p.m.; Worship, 6 p.m. Sunday: Worship, 8 a.m.; Coffee Hour, Sunday School and Adult Class, 9:15; Worship with Sunday School Program, 10:30. Tuesday: Bible Study at Tacos & More, 6:45 a.m.; Staff meeting, 9; Men Who Love Beef, 6 p.m. Wednesday: Children's Choir, 4 p.m.; Children's Chimes, 4:45; All-Church Caroling, 6 p.m. Thursday: Joyful Noise, 6 p.m.; Prayer Partners, 7.

PRAISE ASSEMBLY OF GOD
1000 East 10th St. • 375-3430
Pastors Rick and Ellie Snodgrass
Sunday: Sunday Service, 10:30 a.m.; Evening Service, 6:30 p.m.; Wednesday: Evening Service, 7 p.m. Call for additional information on the ministries available.

ST. MARY'S CATHOLIC
412 East 8th St.
(Fr. Mark Beran, pastor)
375-2000; fax: 375-5782; E-mail: parish@stmaryswayne.org
Friday: Confessions, 7:30 a.m.; Mass, 8 a.m. Saturday: Mass, 8 a.m.; Confessions 4:30 to 5:30 p.m.; Mass with collection for Retirement Fund for the Religious, 6 p.m. Sunday: Third Sunday of Advent. Confessions one-half hour before Mass; Mass, 8 and 10 a.m.; Collection for Retirement Fund for the Religious; Hospitality Sunday following both Masses, hosted by WINGS Youth group; Communal Penance Service, 2 p.m. Spanish Mass has been moved to Emerson on Sunday's at 10 a.m. For more information contact Sacred Heart Parish at (402) 695-2505. Monday: No Mass; St. Mary's School book Fair (through Friday). Hispanic Prayer Group, Holy Family Hall, 6 p.m. Tuesday: Confessions, 7:30 a.m.; Mass, 8 a.m. tory, 8 p.m.; Rosary in Spanish, at church, 6:30 p.m. Wednesday: Confessions, 7:30 a.m.; Mass, 8:15 a.m.; Religious Education classes. Thursday: Confessions, 7:30 a.m.; Mass, 8; St. Mary's School Christmas Program, school basement, 6:30 p.m.; R.C.I.A., rectory,

7 p.m. Friday: Confessions, 7:30 a.m. Mass, 8 a.m.; St. Mary's Prayer Shawl meeting, rectory, 10:30 a.m.; St. Mary's Ringing Bells for the Salvation Army at Pac 'N Save and Pamida, 5 to 8 p.m.

Allen
FIRST LUTHERAN
(Karen Tjarks, Pastor)
Sunday: Worship with Church Christmas Program, 9 a.m.
UNITED METHODIST
(Pastor Sara Simmons, pastor)
Sunday: Worship service, 9 a.m. Wednesday: Bible Study; ACCTS, 3:30 p.m.

Carroll
BETHANY PRESBYTERIAN
(Gail Axen, pastor)
Sunday: Worship service, 9 a.m. Thursday, Dec. 24: Christmas Eve Candle light service, 6 p.m.
ST. PAUL LUTHERAN
(Rev. Timothy Steckling, pastor)
Sunday: Worship service, 8 a.m. Thursday: Advent meal, 6 p.m.; Advent Service, 7.

UNITED METHODIST CHURCH
(Rev. Doyle Burbank-Williams, pastor)
Sunday: Third Sunday of Advent. Worship Service, 8:30 a.m.; Sunday School, 9:30; Sunday School Christmas Program. Monday: Newsletter Deadline.

Concord
CONCORDIA LUTHERAN
(Karen Tjarks, Pastor)
Sunday: Sunday School, 9:30 a.m.; Worship, 10:45.

ST. PAUL LUTHERAN
East of town
(Willie Bertrand, pastor)
Sunday: Bible Study, 8 a.m.; Worship, 9. Monday: Quilting, 1 p.m. Tuesday: Bible Study at Jensen's, 9 a.m. Wednesday: Catechism class, 4:30 p.m.

EVANGELICAL FREE
(Pastor Todd Thelen)
Sunday: Sunday School, 9:30 a.m.; Morning Worship, 10:30; Church potluck with annual meeting to follow at 1:30 p.m. Wednesday: AWANA, "Christmas is for Caring," 7 p.m. Thursday: FCWM Christmas party at Sherrie Patefield's home, 6:30 p.m.

Dixon
ST. ANNE'S CATHOLIC
(Fr. James McCluskey, pastor)
Saturday: Mass, 6 p.m. Wednesday: Religious Education classes, 7 to 8:30 p.m.

Hoskins
PEACE UNITED CHURCH OF CHRIST
(Olin Belt, pastor)
Sunday: Sunday School and Confirmation Classes, 9:30 a.m.; Worship service, 10:30 a.m.

TRINITY EVANG. LUTHERAN
(Rodney Rixe, pastor)
Sunday: Trinity Bible Hour, 9 a.m.; Worship, 10 a.m.

Wakefield

CHRISTIAN CHURCH
3rd & Johnson
Internet web site: www.faxtab.net
(Bill Chase, Pastor)
Sunday: Christian Hour, KTCH, 8:45 a.m.; Prayer Warriors, 9; Sunday School, 9:30; Praise and Worship, 10:30.

EVANGELICAL COVENANT
802 Winter St.
(Ross Erickson, pastor)
e-mail: wakecov@msn.com
Saturday: Christmas Luncheon, 11 a.m. Sunday: Sunday School, 9:30 a.m.; Morning Worship with Sunday School Program, 10:45. Tuesday: Ladies meet for prayer, 9 a.m.; Worship on Cable, 7 p.m. Wednesday: Worship on Cable, 10 a.m.; Confirmation, 4:30 p.m.; Snak Shak, 5:30; Pioneer Club and Junior High, 6:15; Bible Study, 6:30. Thursday: Men's Bible Study, 7 a.m.

IMMANUEL LUTHERAN
4 North, 3 East of Wayne
(Willie Bertrand, pastor)
Sunday: Bible Study, 9:15 a.m.; Worship, 10:30 a.m.; Pledge Sunday Dinner. Tuesday: Bible Study at Jensen's, 9 a.m. Thursday: Immanuel Ladies Aid Christmas Luncheon at Tacos & More, 11:30 a.m.

PRESBYTERIAN
216 West 3rd
(Rev. Charity Potter, pastor)
Sunday: Fellowship time, 10 a.m.; Worship Service, 11.

ST. JOHN'S LUTHERAN
West 7th & Maple
(Rev. Terry L. Bueth, pastor)
Sunday: Worship, 9 a.m.; Education Hour, 10:15.

SALEM LUTHERAN
411 Winter Street
(William A. Koeber, interim pastor)
Saturday: Worship with Communion, 6:30 p.m. Sunday: Choir, 7:30 a.m.; Sunday School, 9; Worship with Communion, 10:30 a.m. Monday: Worship & Music, 7 p.m. Wednesday: Confirmation, Advent Meal and Congregational Caroling, 6 p.m. Thursday: Video on local channel. Saturday: Worship with Communion, 6:30 p.m.

Winside
ST. PAUL'S LUTHERAN
218 Miner St.
(Pastor Timothy Steckling)
Sunday: Sunday School and Bible Study, 9:15 a.m.; Worship, 10:30 a.m.

TRINITY LUTHERAN
(PMA Glenn Kietzmann)
Sunday: Sunday School, 9:30 a.m.; Council meeting, 9:30; Coffee Fellowship, 9:30; Worship with Communion, 10:30; Choir Practice, 11:30. Monday: Choir Practice, 6:30 p.m.

UNITED METHODIST
(Carol Jean Stapelton, pastor)
(Lay Minister - Judy Carlson, CLS)
Sunday: Sunday School, 10 a.m.; Worship service with Holy Communion, 11:15; Christmas Program, 6:30 p.m. Tuesday: Coat of Many Colors quilters, 2 p.m. Wednesday: Pastor in Pierce Office, 1 p.m.

Pie Social
Premier Estates will be hosting a community social hour every Tuesday at 3:00 PM. The social is free to the community and will be held in the assisted living dining room. Please come and visit with our residents and enjoy free coffee & pie!
PREMIER ESTATES
811 East 14th St. Wayne, NE
Phone 402-375-1922
SENIOR LIVING COMMUNITY

BUILD AMERICA BONDS
Taxable Municipal Bonds
1.78% to 7.01%
When you buy a Build America Bond (BAB), you're lending money to municipalities to fund new capital programs, such as roads, schools and hospitals. Let BABs provide you with the opportunity to diversify your taxable income.
Yield effective 12/03/2009, subject to availability. Yield and market value may fluctuate if sold prior to maturity and the amount you receive from the sale of these securities may be less than, equal to, or more than the amount originally invested. Bond investments are subject to interest rate risk such that when interest rates rise, the prices of bonds can decrease and the investor can lose principal value. Any bond called prior to maturity results in reinvestment risk for the owner of the bond. May be subject to alternative minimum tax. Municipal bonds may have original issue discount.
Some of the available issues of bonds are callable. Contact your local Edward Jones financial advisor for more information about maturity dates and applicable call provisions.
Speak with your financial advisor to determine if BABs make sense for you.
Ken Marra
611 Valley Dr., Suite B, Wayne, NE
402-375-2354
1-866-375-9643
www.edwardjones.com Member SIPC
Reggie Yates
300 Main St. Wayne, NE
402-375-4172
1-800-529-0860
Edward Jones
MAKING SENSE OF INVESTING

USave Pharmacy
Your Locally Owned Low Price Leader!
216 E. 7th Street, Wayne, NE
375-2922

NORTHEAST NEBRASKA INSURANCE AGENCY, INC.
111 West 3rd Wayne 375-2696

Family Dentistry
Dr. Burrows
115 W. 3rd St. P.O. Box 217 Wayne, NE 375-1124

FREDRICKSON OIL CO.
Highway 15 North -Wayne, NE
Phone: (402) 375-3535
Wats: 1-800-672-3313
CONOCO Sinclair MICHELIN UNIROYAL BFGoodrich
Tank Wagon Service • Auto Repair • Alignment Balance

Donald E. Koeber, O.D.
WAYNE VISION CENTER
313 Main Street - Wayne, NE
375-2020

PAC' N' SAVE
Discount Supermarkets Home Owned & Operated
1115 W. 7th • Wayne, NE • 375-1202
Open 7 Days A Week • 7:30 AM to 10 PM

TWJ Feeds, Inc.
Complete dairy, swine, cattle, poultry feeds
Carroll, NE 68723-0216
Office: (402) 585-4867
Home: (402) 585-4836 FAX: (402) 585-4892

FARMERS State Bank
CARROLL, NEBRASKA 68723
Member FDIC

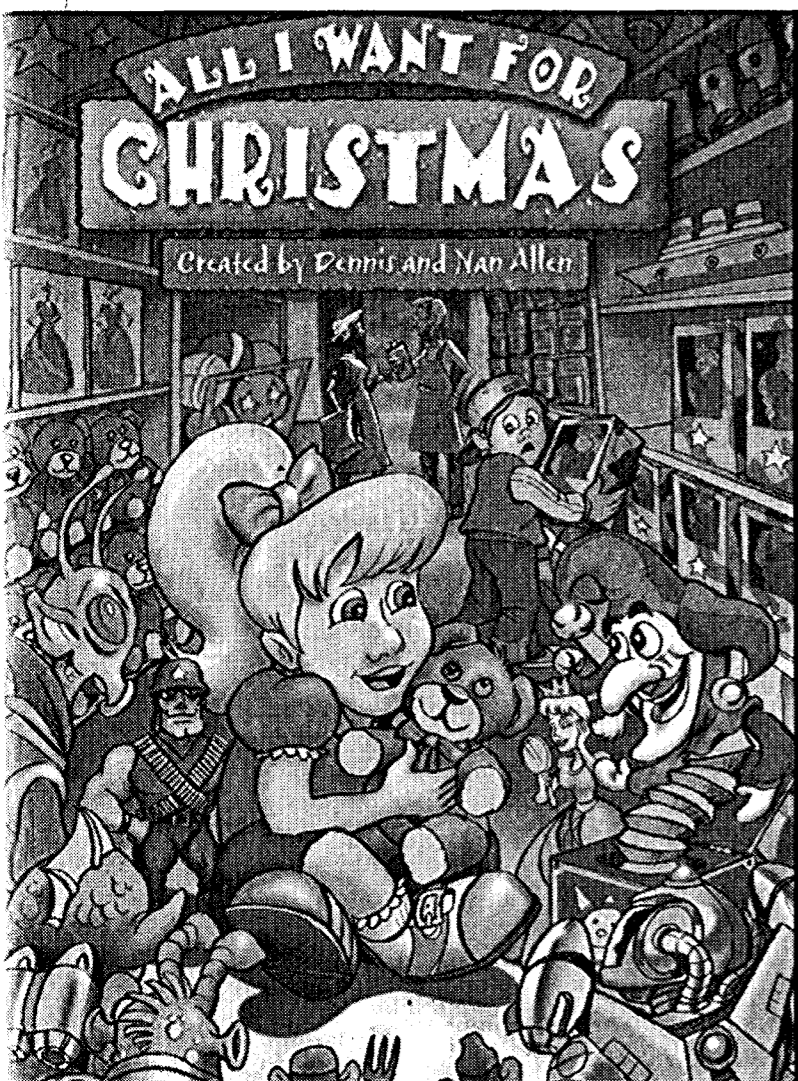
John Deere 100 Series Mowers
NORTHEAST EQUIPMENT
Wayne, NE 375-3325 East Hwy. 35
Nothing Runs Like a Deere®

Tom's Body & Paint Shop, Inc.
Dan & Doug Rose Owners
108 Pearl Street • Wayne, NE • 375-4555
21st year of service to you!

First National Bank of Wayne
"The Bank Wayne Calls First"
Member FDIC

The Wayne Herald
114 Main • Wayne • 402-375-2600

Wayne Auto Parts Inc.
MACHINE SHOP SERVICE
39Years
117 S. Main Wayne, NE.
Bus. 375-3424 Home 375-2380
AUTO PARTS



Journey Christian Church to present Christmas Musical

Wayne area youth will be presenting a one hour Christmas musical about the gift and the giver. Journey Christian Church on Saturday, Dec. 12 at 7 p.m. For the past eight weeks they have been working hard on memorizing their lines and learning the words to the music. They have also been exploring the true meaning of Christmas. The set is a "Toy Store," so it was very appropriate to fill the set with toys that will be donated to families in the Wayne area. The musical is a story of two twin

girls who overcome with a desire for more and more this Christmas. Some of the world's favorite toys past, come to life and through their interactions with the girls, lessons are learned. "The musical is sure to be a treat and is fun for all ages! Bring the family out for a fun, free evening and just maybe they will be touched by what these kids have to share!" said Brook Jech, organizer of the musical. Refreshments will follow the program.



Special delivery

The coat closet at First Presbyterian Church Wayne recently delivered nearly 100 coats, sweaters and sweat-shirts to the Pine Ridge Indian Reservation in South Dakota. Pictured presenting the coats is Presbyterian church deacon Jan Liska, and Norma Blacksmith who received the coats on behalf of the Lakota people.

Wanted ... Church news

The Wayne Herald would like to print information and schedules from area churches. All information submitted to the Herald by Monday at 5 p.m. (delivered to the Herald office) or emailed by 8 a.m. on Tuesday will be included in that week's edition of the paper. Articles may be mailed to P.O. Box 70, Wayne, Neb. 68787 or emailed to clara@wayneherald.com. The Herald thanks its readers and area ministers for their cooperation in our effort to keep informed on the happenings at various churches.

For Real Pain Therapy...
Thera-Gesic® Pain Cream
It Really Works...Compare and SAVE.

Urgent news for people who took **YAZ® or YASMIN®**

Many users of the birth control pill Yaz®, Yasmin® or Ocella® have suffered blood clots in the lungs, legs and other areas, as well as strokes, heart attacks, gall bladder problems and even death. If you or a loved one suffered from any of these problems call us now toll free at 1-800-THE-EAGLE for a free consultation. We practice law only in Arizona, but associate with lawyers throughout the U.S.

GOLDBERG & OSBORNE
1-800-THE-EAGLE (1-800-843-3245)
www.1800theeagle.com

915 W. Camelback Rd. Phoenix, AZ 85013

Open 7 days a week

You've worked hard to get where you are, to achieve the goals you've reached.

As your local independent agent, we'll work just as hard to help make sure all you've built has the right protection.

Ask about *Safe. Sound. Secure.** protection from Auto-Owners Insurance Company.

Because coverage for what took a lifetime to build, shouldn't be decided by the latest fad.

Northeast Nebraska Insurance Agency
Wayne-375-2696 • Wakefield-287-9150 • Laurel-256-9138 • Ponca-755-2511
Coleridge-283-4282 • South Sioux City-494-1356

RETIREMENT OPEN HOUSE

for Teresa Kay and Carmie Marotz
Friday, December 11
9:00 a.m. to 7:00 p.m.
Refreshments
The Diamond Center / Flowers & Wine
221 N. Main • Wayne • 402-375-1804 • 402-375-3747
flowersnwine.com diamondking.biz

SUCCESSFUL INVESTMENT PLANNING ISN'T JUST A COINCIDENCE.

Take **ADVANTAGE** of our investment planning services. Whether you have question on college funding, retirement preparations or maximizing investment opportunities, we have the **PLAN**. Call today to schedule an appointment with Rod Hunke, Financial Advisor, for your customized investment plan.

Rod Hunke
Financial Advisor
402-375-2541

INVESTMENT CENTERS OF AMERICA, INC.
MEMBER FINRA, SIPC
We know the territory.

located at:
1st National Bank of Wayne
411 E. 7th St.
Wayne, NE 68787

FINANCIAL PLANNING | BROKERAGE SERVICES | PORTFOLIO REVIEW | LIFE INSURANCE

Investment Centers of America, Inc., (ICA), member FINRA, SIPC, a Registered Investment Advisor, is not affiliated with First National Bank of Wayne. Securities, advisory services and insurance products offered through ICA and its affiliated insurance agencies are:

NOT INSURED BY FDIC OR ANY FEDERAL AGENCY

May Lose Value
No Bank Guarantee

0113790-0806-40867

HEALTH CARE DIRECTORY

CHIROPRACTOR

Dr. Robert Krugman
Certified Chiropractic Sports Physician
14 Pearl St. Office hours by appointment:
Wayne, NE 402-375-3000

OPTOMETRIST

MAGNUSON-HOPKINS EYE CARE

Dr. Larry M. Magnuson
Optometrist

Dr. Josh Hopkins
Optometrist

215 West 2nd St., Wayne, NE 68787
Telephone: 375-5160

DENTIST

Wayne Dental Clinic

S.P. Becker, D.D.S.
401 North Main Street
Wayne, Nebraska
Phone: 375-2889

WAYNE VISION CENTER

DR. DONALD E. KOEBER
OPTOMETRIST
Phone 375-2020
313 Main St. Wayne, NE

MENTAL HEALTH

COMMUNITY MENTAL HEALTH & WELLNESS CLINIC

119 Main • Wayne, NE 68787
Naomi Smith LMHP, LADC
Laticia Sumner, Counselor
402-375-2468

PHYSICAL THERAPY

Peterson Therapy Services LLC

Diane Peterson, PT
208 Main St. • Wayne • 402-833-5343
Specializing In: • Orthopedic Care
• Muscle & Soft Tissue Injury/Pain
• Geriatrics • Back & Neck Care
• Mechanical diagnosis & treatment of the spine
23 Years Experience

Be healthy. Save money. Be independent.

AND BE QUICK.

Annual Election Period ends 12/31.

CALL TO ENROLL NOW.

The year will be over before you know it. So there's not much time left to get all that Coventry® Health Care has to help you take care of the things that matter most.

DON'T WAIT ANOTHER MINUTE TO GET ALL THIS — AND MORE.

- \$0 monthly plan premiums that leave more money in your pocket to spend on enjoying life
- Wide choice of physicians, specialists and hospitals — so you can select those who are most convenient
- Prescription drug coverage makes it affordable for you to get the prescriptions you need

So take a moment right now to call and find out which plan is right for you. And enrolling is fast and easy.

1-866-765-4205
(TTY/TDD 1-888-788-4010
for the hearing impaired) 8 a.m. to 8 p.m., seven days a week
www.medicare3things.com/NE

Advantra®
from Coventry Health Care

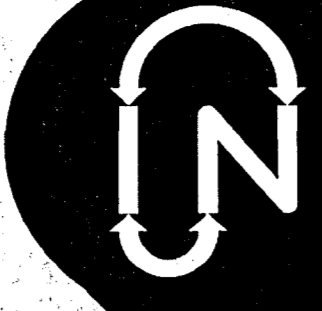
Advantra (Health Maintenance Organization (HMO) / Preferred Provider Organization (PPO)) are Coordinated Care plans with Medicare Advantage contracts.

The benefit information provided herein is a brief summary, but not a comprehensive description of available benefits. Additional information about benefits is available to assist you in making a decision about your coverage. This is an advertisement; for more information contact the plan.

M0003_10MAPD_402a_UrgencyAd CMS File & Use Date: 10/19/2009

Internet Nebraska

3 months for the price of one



Mention this ad when you sign up and receive THREE months of flat-rate dial-up or ADSL access for the price of ONE!
(Phone line charges not part of offer.)

Call **1-800-GET-INET**
(1-800-438-4638)

Agricultural Outlook Seminar 2009

Sponsored by: The Wayne Area Ag Task Force

Friday, December 11th
9 a.m. - 12:00 p.m.
Wayne Fire Hall

Speakers include:
Al Dutcher (Nebraska State Climatologist)
Allea Seaman (Agricultural Solutions)
Tom Hansen (CPA)

For seminar information call Wayne Area Economic Development at 402-375-2240. Advanced Tickets Required

CUSTOMER APPRECIATION DAYS

When you purchase four (4) MICHELIN® brand passenger or light truck tires, you can receive a FREE set of **SMART Jumper Cables**



For Your Service Needs —
Tires, Tuneup, Brakes, Exhaust, Computer Analysis, Air Conditioning & Alignments

MICHELIN BFGoodrich UNIROYAL

FREDRICKSON OIL CO.

Hwy. 15 N • Wayne, NE
402-375-3535 1-800-672-3313
Open 7 Days A Week • 7:00 AM - 9:30 PM

2 Parker Grain Carts On Hand!



Midland EQUIP INC WAYNE
East Highway 35 Wayne, Nebr.
402-375-2166
1-800-477-2166
Financing Available W.A.C.
CNH CAPITAL

©2007 CNH America L.L.C. All rights reserved. Case IH is a registered trademark of CNH America L.L.C.

Wayne Elementary holds Character Connections assembly

Wayne Elementary School November Students of the Month and November birthdays were honored in an assembly held on Nov. 30.

Principal Daryl Schrunk also cited some of the students who have received "High Fives" over the last month.

A "High Five" is a laminated cut-out of a hand that is used by any staff person in the building to recognize good deeds by students. If a staff person notices a student doing the right thing, the staff person can "catch the student being good" by writing his or her name on the "High Five" and making note of what the student did. The student then brings it to the office and places it in a special Character Connections bucket. Mr. Schrunk draws some of these out and announces them in the monthly assembly.

Respect and Citizenship have been the Character Connections words that have been emphasized throughout the school so far this year. The word for December and January is Caring.

Again this year Wayne Elementary School is collecting items for the Food Pantry. Students may (this of course is optional) bring a non-perishable food item to be placed under our Christmas tree. The Food Pantry is asking that the school does not collect cereal as they have abundant cereal at this time.

Character students for the month of November include:

Kindergarten: Rockhill — Yazmin
Total: Meyer — Max Miller;



Students at Wayne Elementary School pose with their certificates following a recent assembly.

Heikes — Ayden Ellis.
First grade: Thomas — Karlee Janke; Maas — Lauren Pick; Ostrand — Couy Johnson.
Second grade: Suehl — Alyssa Chinn; Jodi Lutt — Luis Torres;

Jaixen — Noah Lutt.
Third grade: Garvin — Hana Nelson; Peg Lutt — Kade Jensen; Hansen — Harley Wheeler
Fourth grade: Hix — Kendall

Braun; Janke — Dawson French; Wall — Berto Vergara.

Cutline:
November Character Connections

Dates, locations set for 2010 crop production clinics

Pest management, soil fertility, cropping systems and water management will be among the topics to be presented at the 2010 University of Nebraska-Lincoln crop production clinics to be held at nine locations across Nebraska in January.

The clinics will provide valuable information to help crop producers and agribusiness professionals improve their profitability and safety, said Mark Bernards, extension weed specialist.

The clinics will feature presentations on soil fertility, soil water and irrigation management, cropping systems, pesticide safety, plant disease, and insect and weed management. Program topics are tailored to each location, Bernards said. Program topics can be found at <http://cpc.unl.edu>.

The clinics will be the primary venue for commercial and non-commercial pesticide applicators to renew their licenses in the categories of Ag Plant, Regulatory and Demonstration/Research, Bernards said.

Private pesticide applicators can be recertified by attending the clinics.

Bernards anticipates that certified crop adviser continuing education unit credits will be available in integrated pest management (six CEU), soil and water (two CEU), and crop management (two CEU). Attendees can earn a maximum of six CEU at a location.

Online registration is available for the first time for this event and can be accessed by visiting the Web site. Registration also is available at the door starting at 8 a.m. before each clinic. The cost of the clinic is \$50 or \$60 for those recertifying as pesticide applicators.

Call (402) 472-1547 for more information.

The 2010 program is as follows:
Jan. 5: Adams County Fairgrounds in Hastings;

Jan. 6: Sandhills Convention Center in North Platte;

Jan. 7: Gering Civic Center in Gering;

Jan. 12: Classics (Beatrice Country Club) in Beatrice;

Jan. 13: The Auditorium in York;

Jan. 14: Holiday Inn and Convention Center in Kearney;

Jan. 19: Community Center in Ainsworth;

Jan. 20: Lifelong Learning Center at NECC in Norfolk;

Jan. 21: Midland Lutheran College Event Center in Fremont.

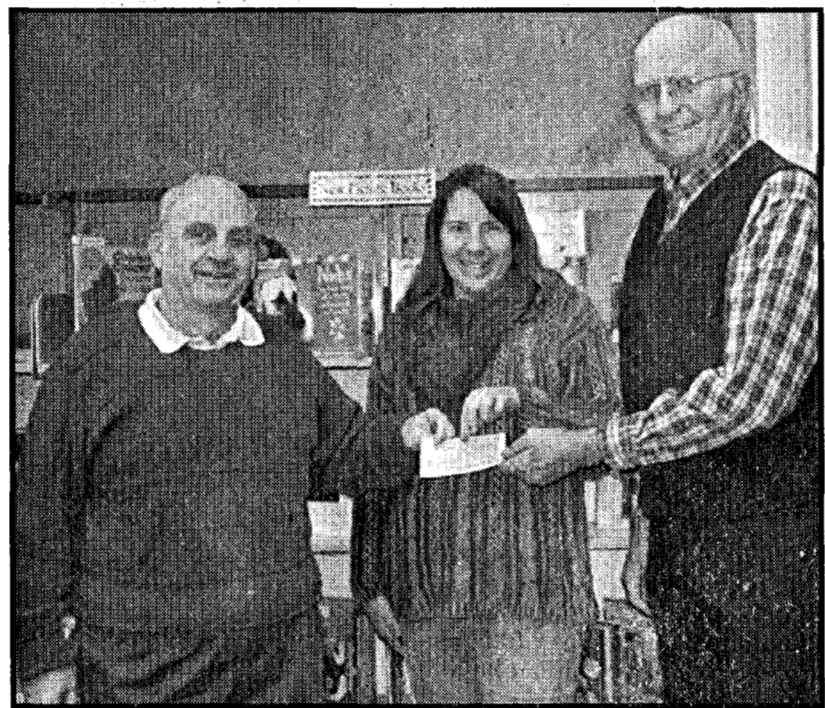
New material obtained by Wayne Public Library

The following is a list of material recently obtained by the Wayne Public Library.

BIOGRAPHY
Branch, Taylor - The Clinton tapes; Moore, Gary - Playing with the enemy; Hogan, Hulk - My life outside the ring; Swayze, Patrick - The time of my life; Mann, William - How to be a movie star; Elizabeth Taylor in Hollywood; Williams, Andy - Moon River and me.

PICTURE
Barrett, Judi - Cloudy with a chance of meatballs; Barrett, Judi - Pickles to Pittsburgh; Browne, Anthony - Silly Billy; Dooley, Norah - Everybody bakes bread; Dooley, Norah - Everybody cooks rice; Dooley, Norah - Everybody serves soup; Jimenez, Francisco - La mariposa; Johnson, DB - Henry hikes to Fitchburg; McClements, George - Baron von Baddie and the ice ray incident; Marshall, James - Swine lake; Martin, Bill - Chicka chicka boom boom.

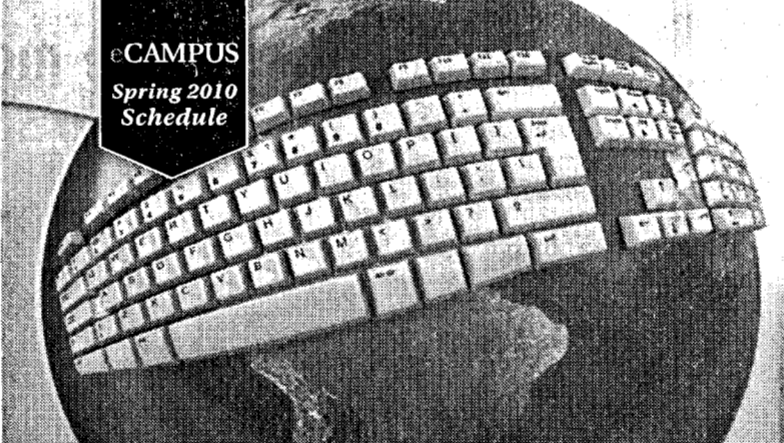
Robberecht, Thierry - Sam is never scared; Sendak, Maurice - Alligators all around; Sendak, Maurice - Chicken soup with rice; Sendak, Maurice - Higglety pigglety pop; Sendak, Maurice - In the night kitchen; Sendak, Maurice - One was Johnny; Sendak, Maurice - Outside over there; Sendak, Maurice - Where the wild things are; Schachner, Judith - Skippyjon Jones lost in spice; Zolotow, Charlotte - Mr. Rabbit and the lovely present.



Helping young readers

The Wayne Masonic Lodge presented a check for \$300 to the Wayne Public Library. The money represents the proceeds from a recent soup supper and will be used for the purchase of children's picture books. Involved in the purchase were, Frank Teach, Julie Osnes and Ken Liska.

eCampus Spring 2010 Schedule



Online Courses

View eCampus Schedule at ecampus.unk.edu

UNIVERSITY OF NEBRASKA
UNK KEARNEY


H1N1...It's not over yet!

Who: *Pregnant Women
*Healthcare and EMS Professionals
*People 6 months thru 24 years of age
*People 25 thru 64 years of age with certain ongoing health conditions
*Household contacts and caregivers for children less than 6 months
*Children 9 and younger who received first H1N1 dose at least 28 days ago

What: Public Health
H1N1 Influenza Clinic
(Donations Welcome)

When: December 10, 2009
4:00-8:00pm

Where: Our Savior Lutheran Church
421 Pearl St., Wayne, NE



NOW is the time to get your shot.

For more information, contact the Northeast Nebraska Public Health Department 402-375-2200 or 1-800-375-2260

A public service provided by members of the Northeast Nebraska Partnership for Healthy Communities: Providence Medical Center, Goldenrod Hills Community Action and Northeast Nebraska Public Health Department

Free Estimates

THE GUTTER CREW

Seamless Gutters & Downspouts
28 Years of Experience
Art Sehl (402)776-2563
Steve Cornett (402)776-2646
PO Box 27 Oakdale, NE 68761
(402)776-2600 • 1-800-867-7492

GET YOUR HOLIDAY SHOPPING DONE FASTER WITH HIGH-SPEED INTERNET FROM WILDBLUE

UP TO 30x FASTER THAN DIAL-UP

STARTING AT ONLY **\$39.95** month
FOR VALUE PACKAGE FOR THE FIRST 12 MONTHS

WILDBLUE
High-Speed Internet. Out of the blue.
877-285-5870
www.wildblue.com
Also available from your local retailer.

AVAILABLE WHEREVER YOU LIVE!

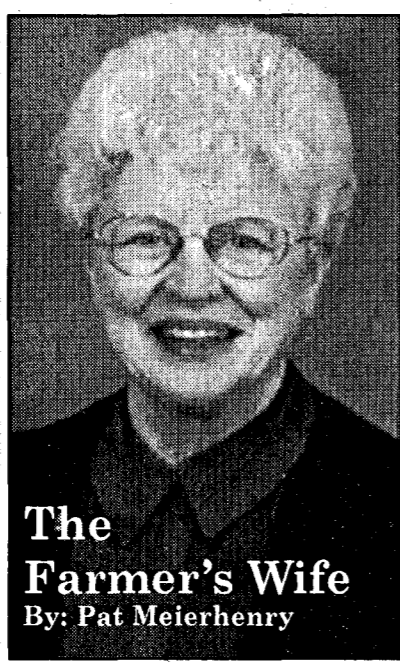


The Wayne Herald

Agriculture

Thoughts running through brain prevent sleep

I received a cute e-mail from my eldest daughter, Sue, that purported to show why women can't sleep!



The Farmer's Wife By: Pat Meierhenry

On Saturday, we had Christmas cantata practice because it's getting to be crunch time. We are scheduled to sing it this Wednesday, unless we are actually in the blizzard that they are forecasting.

After church that evening, we turned on the TV for the Big 12 Championship game. I tried to keep busy and not watch. I read the old Lincoln papers that my Mom had sent home with me.

ting forward in my glider, yelling at our offense! Then, there was the unbelievable moment when we thought we had won; and the most unbelievable second when the clock went back on and that field goal was kicked.

Cash lease meeting, grain storage discussed

By Keith Jarvi, Extension Educator

I am going to remind you one last time about our Flexible Cash Lease meeting in Dakota City next week (the meeting in West Point is Thursday afternoon the 10th).

Since roughly 50 percent of the farmland in our area is rented, it is an important part of our farming system. There have been some changes in definition as to what cash rent is.

It is really a good idea if the landowner and tenant come together to this meeting as this helps foster a stronger business relationship.

Here is some information on grain storage during the winter months from Tom Dorn, Extension Educator in Lancaster County.

regarding storage time. When the corn is above 16 percent moisture, the shelf life is half as long at a given temperature for every two percentage points higher moisture content.

To see a table giving maximum storage times under various combinations of grain temperature and moisture content go to www.extension.umn.edu/specializations/crop-systems/M1080-FS.pdf

Grain above 16 percent moisture in a bin will deteriorate about three times as fast as the estimates in the table if it is not aerated to carry away the heat generated by the fungal growth.

This year, some producers will likely not be able to get all of their grain dried to a moisture content considered safe for long-term storage (15 percent for corn and 13 percent for soybeans) before the weather gets too cold to accomplish enough additional drying to make it economically feasible to continue to run the aeration fans.

Consider intermittent fan operation during winter. This recommendation is contingent on the producer's ability and willingness to closely monitor the corn to detect the first sign of heating in the bin.

Probe several places near the bin walls and a couple of places near the center of the bin. Allow several minutes for the thermometer to equalize with the temperature

darling book called A Dog Called Christmas, the story that had been on the Hallmark channel last Sunday. But we finally called it a day and crawled under the flannel sheets. Then it began: the little blue balls!

"A star, rising in the East"---- How in the world can we win games with just defense and field goals?

"I hear the prophet callin' prepare the way of the Lord"----If only Asante hadn't been called for that horse collar; he's always doing dumb stuff!

"The people who walk in darkness have seen a great light"----Suh deserves the Heisman!

"She's rockin' slow and singin' low, she's rockin' slow and even"----It's going to be a long flight home for that team.

And so it went, until at least 2 am; between the lyrics of the music and the highs and lows of that football game, it's a wonder I slept at all! And if I'm that disappointed, think how those players feel. Oh, well, it's just a game, right? And we have come along way in two years, that's for sure.

Livestock Market Report

The Nebraska Livestock Market conducted a fat cattle sale on Friday.

Prices were 50¢ to \$1 lower on fat cattle. Cows were higher. There were 500 head sold.

Strictly choice fed steers, \$79.50 to \$81.30. Good and choice steers, \$79 to \$80. Medium and good steers, \$78 to \$79. Standard steers, \$60 to \$65.

Beef cows, \$45 to \$50. Utility cows, \$48 to \$52.50. Canner and cutters, \$39 to \$45. Bologna bulls, \$55 to \$65.50.

The fed cattle sale was held on Wednesday and Thursday at the Nebraska Livestock Market in Norfolk.

The market was steady on the 1,300 head sold. 300-400 lb. steers, \$110 to \$125; heifers, \$100 to \$115.

400 to 500 lb. steers, \$100 to \$115; heifers, \$95 to \$107.

500 to 600 lb. steers, \$95 to \$110; heifers, \$90 to \$100.

600 to 700 lb. steers, \$95 to \$102;

heifers, \$88 to \$97. 700 to 800 lb. steers, \$90 to \$97.50; heifers, \$85 to \$90.

800 to 900 lb. steers, \$80 to \$90; heifers, \$82 to \$88.

400 to 700 lb. holstein steers, \$50 to \$55.

700 to 1,000 lb. holstein steers, no test.

The sheep sale was held Saturday at the Nebraska Livestock Market.

The market was steady on all classes. There were 67 head sold.

Fat lambs, 130 to 150 lbs., \$88 to \$90.

Feeder lambs, 40 to 60 lbs., \$90 to \$105; 60 to 100 lbs., \$80 to \$90.

Ewes, good, \$40 to \$60 cwt.; medium, \$30 to \$40 cwt.; slaughter, \$20 to \$30 cwt.

The dairy cattle sale was held at

the Nebraska Livestock Market on Saturday.

The market was steady. There were 25 head sold.

Good baby calves: Crossbred, \$100 to \$200.

Holstein, \$40 to \$75.

Butcher hogs were sold at the Nebraska Livestock Market on Saturday.

Prices were \$2 lower on butchers. Sows were \$4 to \$5 lower. There were 312 head sold.

U.S. 1's + 2's, 230 to 260 lbs., \$40 to \$41; 2's + 3's, 230 to 260 lbs., \$39 to \$40.

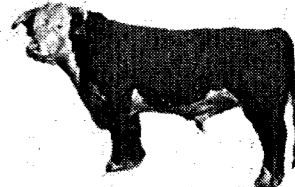
2's + 3's, 260 to 280 lbs., \$39 to \$40; 2's + 3's, 280 to 300 lbs., \$38 to \$39; 3's + 4's, 300 lbs. +, \$30 to \$38.

Sows — 350 to 500 lbs., \$25 to \$30. 500 to 650 lbs., \$30 to \$34.50.

Boars — \$7.50 to \$15.

BULL SALE? Run this size ad in over 170 Newspapers for just \$5.06/newspaper!

Place your 2x2 display ad in over 170 Nebraska newspapers & get your message to over 900,000 readers. Statewide coverage for just \$5.06 per publication.



Call this newspaper or 1-800-369-2850 for more information. Nebraska 2x2/2x4 Display Ad Network

Wherever you are on or off the farm Practice SAFETY

You can help by making your farm a safe place to work and live. After all, having a successful farm is important, but not as important as the safety of you, your family and your employees.

Farmers, be careful out there, and stay safe this season!

Tom's BODY & PAINT SHOP, INC. 108 Pearl Street Wayne, Nebraska 402-375-4555

USED EQUIPMENT

LARGE INVENTORY AT GREAT PRICES! NEW EQUIPMENT COMING IN DAILY!

Table listing various used equipment items such as tractors, combines, hays and forage, and seeders with their respective prices.

NORTHEAST EQUIPMENT, INC.

CALL ANY OF OUR 4 LOCATIONS JOHN DEERE LAUREL, NEBR. HARTINGTON, NEBR. BLOOMFIELD, NEBR. WAYNE, NEBR.

Advertisement for Culligan Water Treatment System featuring 'Four Fabulous Freebies' and '1 Basic Installation Discount'.

WE MAKE IT EASY TO PUT MORE
HAPPY HOLIDAYS **IN YOUR**
HOLIDAYS

and a little something for yourself ...
The Final Touch ...where every day is a gift
 Cards...Gifts...and Fun
 Logan Wayne Nebraska

\$50 purchase = **\$10** gift card
FREE

\$100 purchase = **\$25** gift card
FREE
 limit 1 per visit

Budget Stretcher Deals
 up to **70%**
RED TAG SAVINGS STOREWIDE

oversized smiles
 no extra postage
Hallmark
 Holiday Box Cards
Save 20 - 50 %

THE FINAL TOUCH

Open M-F 9-6 Thurs 9-7 Sat 9-5 Sun 11-3
 just 1 block east of Main on the south end of Logan St Wayne

Winside News

Dana Bargstadt
 402-286-4316
CENTER CIRCLE
 Eleven members of the Center Circle Club met Dec. 3 at Prenger's in Norfolk for a noon Christmas dinner.
 Cards were played afterward with prizes going to Betty Miller, Cleora Fisher, and Claire Brogren.
 Members made a Christmas donation to the Wayne County Red Cross in lieu of a gift exchange. The birthday song was sung for Irene Fork.

The next meeting will be Jan. 21 at Cleora Fisher's home.

Optimist Club plans two holiday events

Wayne Optimist Club met Nov. 24 at the Coffee Shoppe.
 Members invited a guest and treated them to a meal. Lynette Krie led the group in prayer. Members introduced their guest and the group then shared information about the club beginning with the President Bob Wriedt.

Lynette Krie shared information about the fund raising activities and Cindy Von Fange shared information about some of the projects the club does for youth in Wayne and surrounding communities.

Plans for the two upcoming events were finalized. The fund raising activity will be the Soup and Desert supper at Our Savior Lutheran Church before the parade of lights Thursday, Dec. 12 beginning at 5 p.m.

Plans were also finalized for the Krafts for Kids activity for school age children which will be Saturday, Dec. 14 from 9 until 11 a.m. at the Wayne Community Activity Center. This is to provide an opportunity to give parents a chance to shop while children enjoy time to make a craft or two. The meeting closed with the reading of the Optimist Creed. Anyone interested in Optimist need contact a member or Bob wriedt 375-7819 or optimist-builderbob@yahoo.com. The Optimist Creed is "bringing out the best in kids."

Blood bank makes visit

The Siouxland Community Blood Bank conducted a blood drive on Nov. 27 at the Wayne Fire Hall.

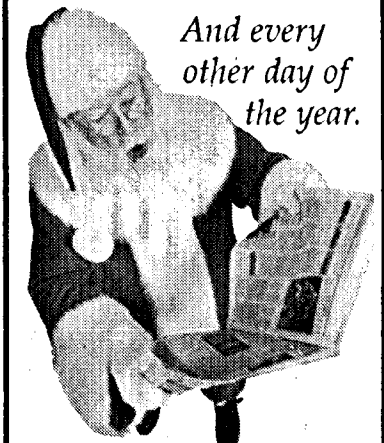
A total of 26 donors registered and 29 units were collected.

Those involved included:
 Cindy Beckman, Jerry Buoy, Jeffrey Carstens, Lonnie Ehrhardt, Harold Fleer, Sharon Fleer, Ronald Gentrup, Pamela Greunke, Pearl Hansen, William Hill, Dale Hochstein and Laura Hochstein.

Also, Todd Hoeman, Donald Hype, Karen Jones, Alicia Karli, Donna Martin, Darrell Miller, Mitchell Osten, Bryan Ruwe Jr., Edward Schroeder, Maxine Schwanke, David Shelton, Patricia Thompson, Connie Wageman, Jessica Wageman.

Special congratulations were extended to those who reached gallon milestones:
 Dale Hochstein - six gallons.

The Perfect Gift For Christmas...



And every other day of the year.

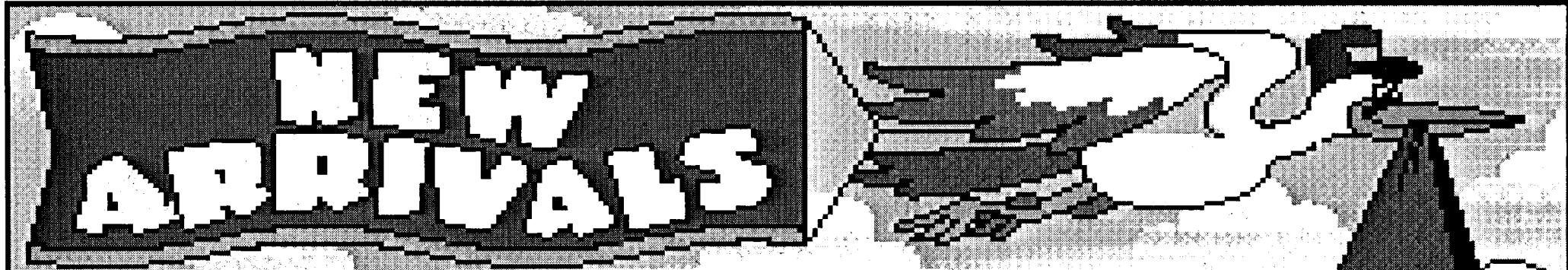
A newspaper subscription delivers the goods:
 • News & Information
 • Editorials & Sports
 • The Classifieds

1 Year in Wayne & Surrounding Counties - \$44.00
1 Year in Other areas of Nebraska - \$54.00
1 Year in Other States - \$54.00

The Wayne Herald/ Morning Shopper

114 Main Street
 Wayne, NE 68787

402-375-2600



Look what the stork brought...
"2009 Area Babies"

Proud Parent?

Grandma & Grandpa, do you want to brag?

Bring a picture of your child, grandchild, godchild, niece or nephew born in the year 2009 or mail it with your payment to:

The Wayne Herald
P.O. Box 70, Wayne, NE 68787.

On Thursday, January 21, we will publish the pictures in the Wayne Herald.

Cost to print will be \$16.00

Include a self-addressed stamped envelope to return your picture. If you have any questions, please call (402) 375-2600.

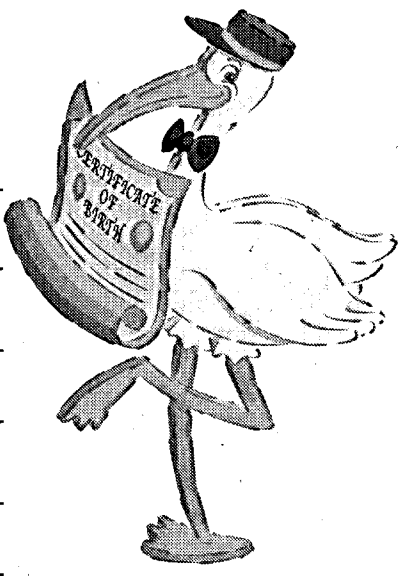
Deadline is Wednesday, January 13th.

To be included in the Wayne Herald, fill out this section & return along with a picture and your payment to:

The Wayne Herald
P.O. Box 70, Wayne, NE 68787

Name _____
 Address (Town) _____

 Parents _____
 Grandparents _____
 Birthday _____



Congratulations!



Mock Trial — State Qualifiers

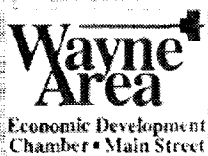
Front row, left to right: Kelly Gentrup, Joey Dunklau, Kristin Liska and Lisa Temme. Back row, left to right: Jacob Pulfer, Andrew Pulfer, Marcus Baier and Jorge Dunklau.

One Act Team — District Runner-Up

Front row, left to right: Tanner Schopke, Jason Holt and Aaron Svenson. Middle row, Jenny Zink, Avie Veldkamp and Lila Goos. Back row, Katie Kietzmann and Laura Anderson. Not present, Kori whitt, Makayla Frye, Taylor Harris and Sarah Bart.



First National Bank of Wayne, member FDIC
 Sebade Construction
 Gill Hauling, Inc
 U Save Pharmacy
 Northeast Equipment, Inc.
 Northeast Nebraska Insurance
 State National Insurance Agency
 Wayne Area Economic Development Chamber
 • Main Street
 Vel's Bakery
 Tom's Body & Paint Shop, Inc.
 Pac N Save
 TWJ Feeds, Inc.
 Quality Food Center
 Wayne East - Prime Stop
 Doescher Appliance



First National - Omaha Service Center
 Wood Plumbing & Heating
 Pieper, Miller & Dahl
 Bailey's Hair & Nails
 Wayne Herald / morning shopper
 Pizza Hut
 First National Insurance Agency
 Accounting Plus
 Wayne Community Activity Center
 The Oaks Retirement Community
 Tom Hansen, CPA
 IPI
 Sharp Construction
 State National Bank & Trust Co., member FDIC
 Wayne Auto Parts - Carquest
 The Coffee Shoppe



White Dog
 The Max
 BankFirst, member FDIC
 Sinclair/Daylight **Sinclair**
 Carhart Lumber
 Glen's Auto Body & Sales
 Discount Furniture
 Heritage Homes/Heritage Industries
 Wayne Vision Center
 State Farm Insurance
 Ellis Plumbing, Heating & A/C
 Fredrickson Oil
 Stadium Sports
 McDonalds
 Gerhold Concrete
 Farmers State Bank, member FDIC
 Ameritas
 Runza

Allen News

Missy Sullivan
402-287-2998

SANTA & MRS. CLAUS

Pictures with Santa Claus and Mrs. Claus will be at the K-12 Christmas Concert on Monday, Dec. 14. They will visit the pre-school children before the concert in the gym and with the elementary children in their classrooms after each class performs.

Pictures of each child on Santa and Mrs. Claus's laps can be purchased that evening. Orders and payment will be taken in the Commons Area before the concert. A note will be sent home with each K-4th grader the week before the concert for pre-ordering/paying.

CHRISTMAS CONCERT

The K-12 Christmas Concert will be on Monday, Dec. 14 at 7 p.m. A wide variety of music will be presented, including the music for the 2010 Cotton Bowl. The Music Boosters will have their yearly Bake/Craft Sale.

MUSIC BOOSTERS

Jack Hintz has donated a Cedar

Curio Cabinet to be raffled off for the Music Department. It is hand milled by Jack from cedar logs by the river. Stop in and see the beautiful curio cabinet on display at Security National Bank. The cabinet will be raffled off in December. Tickets are 1 for \$1 or 6 for \$5.

Cotton Bowl Fundraiser - All you can eat fish fry on Saturday, Dec. 12 at the Buzzsaw in Waterbury. They will be serving from 5 p.m. unto 8:30 p.m.

Need Help Wrapping Presents?

Do you hate wrapping Christmas gifts? Don't have time? Have Nosey children? Bring your gifts to the Firehall and they will wrap them for you! The Music Boosters will be wrapping gifts at the Allen Firehall on Saturday, Dec. 19 from 7:30 a.m. until 1 p.m. This is a free will donation fundraiser.

COMMUNITY CLUB

Santa and Mrs. Claus will again visit the children and hand out candy sacks at the school Christmas Concert on Monday, Dec. 14. The candy bags will be made on Friday,

Dec. 11 at 5:30 p.m. at the school Commons area.

AUXILIARY SUPPER

The Legion Auxiliary Christmas Party and Supper will be on Tuesday, Dec. 15 at the Village Inn at 6:30 p.m. .Reminder - please bring something for the Adopt a Soldier Care package.

US CELLULAR FUNDRAISER

U.S. Cellular has a program that donates \$100,000 to schools. The program runs through Jan. 15, 2010. Just visit any US Cellular store to get a code to use online to vote for your school. There is no purchase necessary to vote. This would be a great opportunity for Allen to add funds to the gym fundraising campaign. Please refer to the following web site for details on how to support the school and the gym fundraising program. http://www.uscc.com/uscellular/SilverStream/Pages/x_page.html?p=callingallcommunities.

CHRISTMAS CANTATA

The United Methodist Church invites the public to their Christmas

Cantata on Sunday, Dec. 20 at 9 a.m. The Christmas Cantata will be performed by Plum Crazy for Christ Worship Team and Shades of Light at the Allen United Methodist Church.

CHRISTMAS PROGRAM

The First Lutheran Church will hold its Christmas Program on Sunday, Dec. 13 at 9 a.m. during regular worship.

CHRISTMAS PARTY

There will be a Children's Christmas Party on Saturday, Dec. 19 from 11 am - 2 p.m. at the United Methodist Church in Allen. All community children, grades kindergarten through sixth grade, are invited to attend. They will be shopping for free gifts for parents and siblings and decorating cookies. Also provided will be a free lunch. If you have any questions, please call Carol Chase at 635-2440.

COMMUNITY BIRTHDAYS

Friday, Dec. 11: Ann Ferdig, David McCorkindale, Kathleen Plueger, David Stallbaum.
Saturday, Dec. 12: Breanne Benstead, Duane Lund, Isabell Kumm, Tammy Twohig.
Monday, Dec. 14: Myrna Roeber, Connor Sowards, Kyle Smith.

Tuesday, Dec. 15: Eunice Diediker, Joseph Grone, David Rastede.

Wednesday, Dec. 16: Christopher Levine, Janice Harder, Kathy Boswell, Nicole Carr.

Thursday, Dec. 17: Arlene Chase, Vicky Hingst, Cindy Sperry.

Friday, Dec. 18: Alexis Johnson, Larry Klemme, Lori Koester, Bryce Williams, Shannon Sullivan, Bob & Jeanette Hohenstein (A).

SENIOR CENTER

Friday, Dec. 11: Meatloaf, mashed potatoes, corn, apricots, cream puff dessert.

Monday, Dec. 14: Barbecue chicken, baked potatoes, Harvard beets, plums, peanut butter cookie.

Tuesday, Dec. 15: Taverns, potato salad, 3 bean salad, apple dessert.

Wednesday, Dec. 16: Polish sausage, tri taters, lettuce salad, rice & raisins, carrots.

Thursday, Dec. 17: Swiss steak, baked potato, mandarin oranges.

Friday, Dec. 18: Brunch, 8:30 a.m. - Egg casserole, mixed fruit, orange juice, and coffee cake.

COMMUNITY CALENDAR

Friday, Dec. 11: JVG/JVB/VG/ VB vs. Homer 4 p.m.; Exercise &

walking class at Senior Center, 9 a.m.

Saturday, Dec. 12: Music Booster Fish Fry at Waterbury, 5 - 8 p.m.

Sunday, Dec. 13: First Lutheran Church Christmas Program, 9 a.m.

Monday, Dec. 14: Exercise & walking class at Senior Center, 9 a.m.; Christmas Concert K-12 at school, 5 p.m.; School Board meeting, 7:30 p.m.; Legion Auxiliary meeting; Village Board meeting.

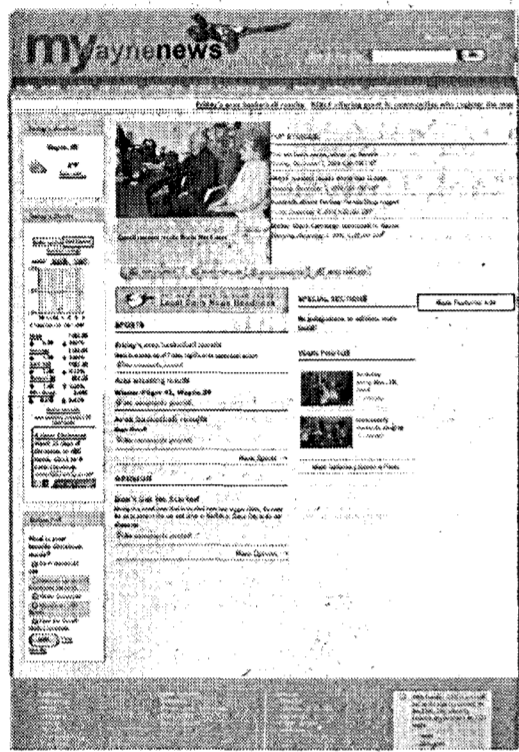
Tuesday, Dec. 15: JVG/JVB/VG/ VB vs. Hartington 4 p.m.; Massage Clinic at Senior Center, 8 a.m.; Somerset at Senior Center 1:30 p.m.; Legion Auxiliary Supper at Village Inn, 6:30 p.m.

Wednesday, Dec. 16: Exercise & walking class at Senior Center, 9 a.m.

Thursday, Dec. 17: JH Boys basketball vs. Emerson-Hubbard, 2:30 p.m.; Book Club meets, 2 p.m. at Senior Center.

Friday, Dec. 18: JVG/JVB/VG/ VB at Newcastle 4 p.m.; Exercise & walking class at Senior Center, 9 a.m.; Brunch at Senior Center, 8:30 a.m.

www.mywaynenews.com



We Make Wayne Click!

- We now have Videos!
- Vote in our weekly poll
- Leave us comments on our stories
- Check out the local weather conditions
- See our photo galleries
- Stock market report

www.mywaynenews.com

Edward Jones Ranks No. 1 in National Survey of Brokers

For the 17th consecutive year, Edward Jones ranked No. 1 in Registered Rep. magazine's annual survey of the nation's five largest financial services firms, according to Ken Marra and Reggie Yates, Edward Jones financial advisors in Wayne. The magazine randomly selects financial advisors nationwide and asks them to rank their firms in various categories.

Edward Jones' overall score was 9.4 out of 10 possible points. The overall average for all firms was 7.6. The firm scored highest in all of the 17 categories ranked, including overall work environment and compensation, senior management, overall ethics and public image.

"I am delighted that our financial advisors feel that good about the Edward Jones opportunity, that good about our firm and our values and the focus we place on individual investors and providing them with excellent client service," said

Edward Jones Managing Partner Jim Weddle. "It is an honor that we earn every day."

Ninety-eight percent of the Edward Jones financial advisors surveyed said they work for the "best firm," while 97 percent said they'll be at Edward Jones two years from now, according to the trade magazine.

"Considering the extraordinary challenges we have faced in the economy and our industry, this ranking is especially meaningful to us this year," said Jim Weddle, Managing Partner. "We consider it a vote of confidence in the value of our business model and our core value of working together in partnership."

Edward Jones provides financial services for individual investors in the United States and, through its affiliate, in Canada. Every aspect of the firm's business, from the types of investment options offered

to the location of branch offices, is designed to cater to individual investors in the communities in which they live and work. The firm's 12,000-plus financial advisors work directly with nearly 7 million clients to understand their personal goals - from college savings to retirement - and create long-term investment solutions that emphasize a well-balanced portfolio and a buy-and-hold strategy. Edward Jones embraces the importance of building long-term, face-to-face relationships with clients, helping them to understand and make sense of the investment options available today.

Edward Jones, which ranked No. 2 on FORTUNE magazine's "100 Best Companies to Work For 2009," is headquartered in St. Louis. The Edward Jones Web site is located at www.edwardjones.com, and its recruiting Web site is www.careers.edwardjones.com. Member SIPC.

THE GREAT HOLIDAY GIVEAWAY

Nov. 16th - Dec. 24th

WEEKLY PRIZES:

Prizes consist of Gift Certificates worth \$100, \$50, \$25 & 5 - \$15. Gift Certificates will be made out for the business in which the name was drawn.

Drawings will be held each Friday, with the last drawing to be held on Dec. 24th.

This Week's Holiday Giveaway Winners are:

- \$100.00 -- Barbara Suell, Mines Jewelers
- \$50.00 -- Janis Myers, Wayne Greenhouse
- \$25.00 -- Roger Haahr, Security National Bank
- \$15.00 -- Damon Henschke, Wayne East
- \$15.00 -- Diane Roeber, Fredrickson's
- \$15.00 -- Mary Baker, Nana's This & That
- \$15.00 -- Linda Monk, The Coffee Shoppe
- \$15.00 -- Diane Vovos, Northeast Equipment

Stop at the winning store to pick up your certificates

30% OFF
Leanin' Tree Christmas cards
\$6.98/box of 10

Copy Write Publishing
216 Main ~ 375-3729

Hershey's 8-12 Oz.
Baking Chips
\$1.89

Quality Foods

517 Dearborn Street
Wayne
402-375-1540

OPEN 7 DAYS A WEEK
7:30 AM - 9:00 PM

HOME OWNED & OPERATED

Happy Holidays!

CASEY'S GENERAL STORE

Wayne
407 E 7th St
(402) 375-4837

A Convenience Store and A Whole Lot More!

THE GREAT HOLIDAY GIVEAWAY

Fredrickson Oil Co.

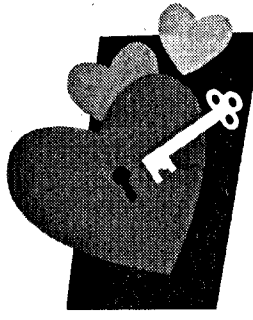
Hwy. 15 N • Wayne, NE
402-375-3535 1-800-672-3313
Open 7 Days A Week
7:00 AM - 9:30 PM

For Your Service Needs
**Tires, Tuneup, Brakes,
Exhaust, Computer
Analysis
& Air Conditioning**

You Can Wear Your Heart on Your Sleeve

But You Can Wear Ours on Your Finger or Neck

Come In And Check Out Our New Original Rings And Key Pendants Featuring Heart Designs



"Jewelry Is Personal Again"
204 Main Street • Wayne
402-833-5109
Hours: Monday-Friday 9:30-5:30;
Saturday 9:30-4:00
www.minesjewelers.com

9 Month Investment CD

1.50% APY*

Annual Percentage Yield effective 9/21/2009
\$1,000 required minimum opening deposit
Substantial penalty for early withdrawal

"Investing in Wayne's Future"



The State National Bank & Trust Company

122 Main St. • Wayne, NE • 402-375-1130
Drive-In located at 10th & Main Street
www.state-national-bank.com

ATM: Main Bank, 7th & Window, Pac 'N' Save & Pamida
Main Bank Lobby Hours
Mon.-Fri. 8:30 am to 4:30 pm
Sat. 8:30 am-12 Noon
Main Bank Drive-in Hours
Mon.-Wed. 7:30 am to 5:00 pm
Thurs. & Fri. 7:30 am - 6:00 pm
Sat. 8:00 am-12 Noon
Drive-in Hours at 10th & Main • Mon.-Sat. 9:00 am - 6:00 pm



JACOB'S ROOM

202 Main, Wayne, NE
402-833-5332
www.jacobsroom.com
Extended Holiday Hours:
Mon.-Thurs. 11am-8pm
Fri. 11am-6pm
Sat. 9am-5pm
Sun. 12pm-4pm

From his room to yours...

PARADE OF LIGHTS THURSDAY, DECEMBER 7

Santa is coming to Jacob's Room after the parade! Enjoy music provided by a local Wayne clarinet ensemble



Saturday, Dec. 12
Santa will be at Jacob's Room with pictures being taken by Moments Portrait Boutique. There will also be an Usborne Books open house provided by Julie Kvolts.

'Tis the Season ... If you purchase a toy for a school or toy drive your entire purchase is 10% Off!
Good until Christmas

Happy Holidays

Book Your Holiday Parties Now!



Eat In or Carry Out
211 Main St.
375-3416



Special 5-Day or 10-Day Passes On Sale Now

(Valid Dec. 14, 2009 - Jan. 8, 2010)
Perfect for that college student back home or family in town for the holidays!

5-Day Pass Reg. \$20 **Special \$15**
10-Day Pass Reg. \$30 **Special \$25**
(Prices do not include tax)

HOLIDAY HOURS

Christmas — Thursday, Dec. 24, Closed at 3 p.m.; Friday, Dec. 25, Closed all day; Saturday, Dec. 26, Open at 10 a.m.
New Year's Eve — Thursday, Dec. 31, Closed at 5 p.m.; Friday, Jan. 1, Closed all day; Saturday, Jan. 2, Open at 10 a.m.
Regular hours on all other days!

15% Off of Wayne High Apparel items sold through the Activity Center — Effective thru Dec. 24, 2009

Wayne Community Activity Center

901 West 7th St. — 402-375-4803
Stop in and see how good fitness looks on you.

PICK UP YOUR FREE REWARDS CARD

The more you shop, the more prizes you win!

Don't forget your Gift Cards. Perfect for any Christmas Gift

603 Main Street
Wayne, NE 68787

375-9982 375-4151



Celebrate The Season

Special gifts for Teachers, Sunday School Leaders, Day Care providers, Card Club Exchanges, Stocking Stuffers and so much more!
Christmas Music CDs, Flameless Candles, Nativities, Santas, Snowmen, Angels, Birdhouses, Wind Chimes, Unique Ornaments, Centerpieces, Door Pieces
POINSETTIAS & CHRISTMAS CACTUS
We Gift Wrap for FREE!!

EXTENDED HOLIDAY HOURS:

Sunday, December 13 — 12:30 - 4:00 p.m.
Sunday, December 20 — 12:30 - 4:00 p.m.
December 14-18 & December 21-23 Open Until 6:00 p.m.

The Wayne Greenhouse

Kent's Photo Lab

215 E. 10th • Wayne, NE • 402-375-1555
www.thewaynegrreenhouses.com

Nabisco 14-16 Oz. Ritz

CRACKERS



2\$5

For

Good Dec. 11-12-13, 2009

PAC 'N' SAVE

1115 W. 7th St. • Wayne, NE 68787
HOURS: 7:30 a.m.-10:00 p.m.
7 Days A Week!
www.pacnsavegrocery.com

See us first for your John Deere Collectables Shirts • Hats • Baby Clothes

Now Through Christmas All TOYS 15% OFF



Wayne, Hartington, Laurel, Bloomfield, NE
Phone: 402-375-3325 or 800-343-3033
Fax: 402-375-3033

YOUR True Full Service Bank!

We have all the products and services of the large banks with the experienced, personal and friendly service of your community bank!

Some of Our Great Products & Services

- FREE CHECKING
- FREE INTERNET BANKING
- FREE ONLINE BILL PAYMENTS
- FREE VISA CHECK CARD

Security National Bank

LAUREL
OSMOND
ALLEN
HARTINGTON
COLERIDGE
www.secnatbank.com
MEMBER FDIC



Wayne East PRIME STOP

Open 24 Hours
1330 E. 7th St. • Wayne, NE
375-1449 • Fax: 375-2671
www.wayne-east.com

A Perfect Fit for Everyone in the Family.

Give a Shell Gift Card

Easy to Buy,
Easy to Use,
Something They
Will Never Return



To place your ad call: Jan at 402-375-2600 or 1-800-672-3418 • Fax: 375-1888

DEADLINES: Line Ads Tuesdays at Noon • Display Ads Monday 5:00 p.m.

CLASSIFIEDS

Rate Schedule: 5 LINES, \$12.00 • \$1.25 EACH ADDITIONAL LINE • This is a Combination Rate with The Morning Shopper

Ads must be prepaid unless you have pre-approved credit. Cash, personal checks, money orders, VISA, or MasterCard are welcome.

Call: 402-375-2600, Fax: 402-375-1888, or Visit Our Office: 114 Main Street, Wayne, NE.

POLICIES — We ask that you check your ad after its first insertion for mistakes. The Wayne Herald is not responsible for more than ONE incorrect insertion or omission on any ad ordered for more than one insertion. Requests for corrections should be made within 24 hours of the first publication. The publisher reserves the right to edit, reject or properly classify any copy.



HELP WANTED

Full-Time Dispatcher / Jailer

The Dixon County Sheriff's Office is currently accepting applications for the position of a Full-time Dispatcher/Jailer. Applicants must have basic computer skills, the ability to operate office equipment, ability to answer multi-line telephone system; including emergency calls and to operate multi-frequency radio and paging system upon completion of training. Applicants must be at least 21 years of age and have a high school diploma. Applications can be obtained by writing the Dixon County Sheriff's Office, P.O. Box 900, Ponca, NE 68770 or by calling 402-755-5608. Applications will be accepted through 4:00 p.m. on December 18, 2009. The Dixon County Sheriff's Office is an Equal Opportunity Employer.

**ESU #1 seeks applicants for the following full-time position
Paraeducator at Tower School**

Join a team of professionals committed to providing quality services to children in Northeast Nebraska. We offer competitive wages and an excellent benefit package.

Send letter of interest and resume to:
Personnel — ESU #1
211 Tenth Street, Wakefield NE 68784-5014
402.287.2061
www.esu1.org

**WISNER CARE CENTER
CNA**

- Day Shift
- Full-time/Part-Time
- 8 and 12 hour shifts available
- Excellent Compensation/Benefit Package
- Great Work Environment
- City Owned and Operated
- Deficiency Free State Survey

If you love caring for the elderly and take great pride in being the best, apply in person or call:

Arianne Conley RN, BSN
Director of Nursing • Wisner Care Center
1105 9th St. • Wisner, NE • 402-529-3286

EMPLOYMENT WORKS, INC.

has a part time position open in the Wayne area providing community based supports for people experiencing a disability. Must have a high school diploma/equivalency, valid driver's license and insurance, strong references, excellent communication skills and a genuine desire to see people reach their potential. Early morning hours involved (approximately 7:45-10 a.m.) Wage based on experience and flexibility. Applicant must be able to work a variety of hours and some weekends. Please call Employment Works, Inc. at (402) 371-1011 and ask for Jodi or Aleigha for more information or stop by the office at 101 East Wilson Avenue in Norfolk for an application.

HELP WANTED

Positions Available for:

- CNA's**
Full Time — Day & Evening Shifts
- Med Aids**
Full time • Part Time
- LPN Assisted Living**
- Dietary Manager**
Full Time



PREMIER ESTATES

SENIOR LIVING COMMUNITY

Apply At:
811 East 14th Street
Wayne, NE
Phone 402-375-1922

— HELP WANTED —

CNA'S — Full-Time, Day Shift
HILLCREST CARE CENTER & ASSISTED LIVING
702 Cedar Ave. • Laurel, NE • 402-256-3961



FT Cellular/Wireless Retail Sales Associate

needed for Viaero Wireless's Wayne Sales Team! At Viaero, we are truly committed to your success! As a member of the Viaero Sales Team, you'll enjoy outstanding earning potential, leading-edge commission/reward programs, best-in-class training, and continuous support/development from our experienced Territory Managers. Expert marketing support, cutting edge products/technology, and powerful brand recognition in working for the leading rural wireless carrier in Nebraska and Colorado makes for a winning combination! Excellent communication and interpersonal skills are essential, 1-2 years retail sales/customer service experience preferred.

For immediate consideration apply online at www.viaero.com. You can also apply in person at our Wayne Sales Office, 304 Main St., Wayne, NE 68787.

Viaero seeks & values a diverse workforce, and strives to make a difference in the communities we serve. EOE M/D/V.

HELP WANTED

Office Manager, 30-40 hours per week. The preferred candidate will have good oral and written communication skills; organizational, time management skills; basic computer experience including financial software; and knowledge of general office procedures.



Wayne Area Economic Development
PO Box 275
Wayne, NE 68787

Review of applications to begin immediately.

FULL TIME Help Wanted

Great Dane Trailers is looking for highly motivated individuals that want to work in our modern environment. Our organization is the largest manufacturer of semi-trailers in the country and is seeking candidates to fill full-time positions. We are currently taking applications for both shifts:

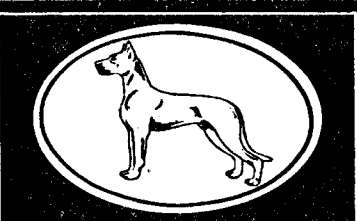
- First Shift**
Monday-Thursday 5:00 a.m.-3:30 p.m.
- Second Shift**
Monday-Thursday 4:00 p.m.-2:30 a.m.

Must be 18 years of age. Previous production experience is helpful but Great Dane provides all training. Candidates are to successfully complete a post job offering drug screen. Individuals wanting to join a winning team should apply in person at:



GREAT DANE TRAILERS
1200 N. Centennial Road
Wayne, NE 68787
A Division of Great Dane Limited Partnership
EOE ISO 9001:2008 Registered Plant
We are now accepting applications for 3-day weekend shift.
Friday & Saturday 5:00 a.m.-5:00 p.m.
Sunday noon-12:30 a.m.

The Wayne Housing Authority (Villa Wayne) will be taking applications for the part time job opening of executive director. This is an equal opportunity position. Must be able to use the computer. Application blanks are available at the office located at 409 Dearborn St. Wayne, NE 68787



NOW HIRING PART TIME SECURITY GUARD
(Saturday and Sunday)
1st shift 7:00 am-3:00 pm
Also cover hours for Full-time guard's vacation, holidays or illness
Must have a high school diploma, good communication and people skills, and be dependable, trustworthy, and use good judgment in emergency situations.
Interested parties should apply in person at:
Great Dane Trailers
1200 North Centennial Road
Wayne, NE 68787
EOE

— HELP WANTED —
ACTIVITY DIRECTOR
Outgoing, caring, creative person to coordinate activities for our residents.
Varying hours with some nights and weekends.
Apply in person or send resume to:
Wisner Care Center
1105 9th Street • 402-529-3286 • Wisner, NE 68791

— HELP WANTED —
Kitchen Cook/Dietary Aide
Part-time
Housekeeping
Apply in person to:
THE OAKS Senior Living Community
The Best In Senior Living Options
1500 Vintage Hill Drive • Wayne, NE
Phone: • 375-1500

Naturally Recycled Proteins (NRP) — Wakefield, NE
Immediate Openings for Full-Time Production
(1st and 2nd Shifts)
• Prior Experience in Production & Maintenance Preferred
• Quality Control and Safety Experience Helpful
• Excellent Communication Skills a Must
• Able to Work with Minimal Supervision
• Health Insurance, Dental Insurance & Life Insurance Available
• Paid Holidays and Paid Time Off
• Over-Time Offered
• Uniforms Provided
• Starting Wage Depending on Qualifications
• Must be able to pass pre-employment drug screen EOE
Please Apply in Person (Monday-Friday 8 a.m.-5 p.m.)
58555 Hwy. 35 E • Wakefield • 402-287-9176

Immediate Opportunities Available
Traveling Assembly Team Members: 3 positions available for hard working, mechanically inclined individuals who are looking to travel the country while assembling farm equipment. Travel approx. 90% of the time, CDL is preferred, or willingness to get one is required. Travel will be primarily week-long trips, but will also include some extended trips. Overtime available. Competitive wages; per diem; excellent benefits. Stop in or call Mark Gaer or Keith Anderson if interested. 1708 H Ave Thurston NE
Thurston Manufacturing Company
BLU-JET (800) 658-3127
SIDE DUMP (800) 633-1648
Hwy 87A
Thurston, NE 68062-0218
Phone: 402-385-3041
Fax: 402-385-3043

HELP WANTED
Lunch and evening shifts.
Some flexibility available in hours.
SNACKY JAKES
Italian Pizza & Subs
118 E. 2nd St. • Wayne
402-833-5252

**Check Our Website: www.mywaynenews.com
We Make Wayne Click!**

HELP WANTED: Mystery Shoppers. Earn up to \$150 per day. Undercover shoppers needed to evaluate retail and dining establishments. No experience required. Call 877-424-4925.
PART-TIME CHURCH secretary position, 9-12 hours per week, First Presbyterian Church of Wayne. Interpersonal, organizational, and computer skills required. Call 375-2669 to apply.

